

The *Cormac* (1330)

POST & BEAM



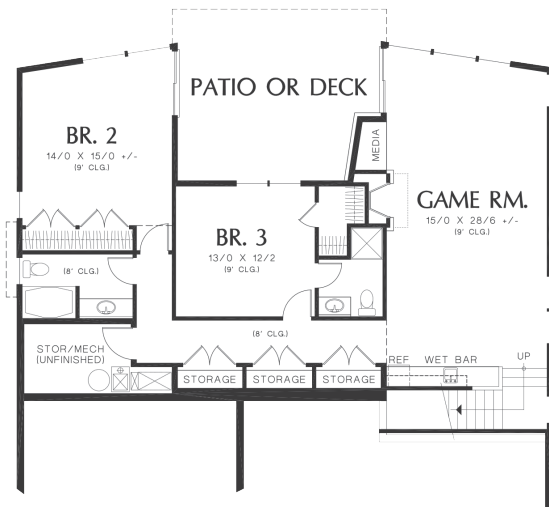
Square Footage	
MAIN FLOOR	1893
LOWER FLOOR	1349
UPPER FLOOR	-
TOTAL LIVING AREA	3242
GARAGE	486
COVERED ENTRY/PORCH	152
BALCONY/DECK	193
TOTAL AREA	4073

Angled rooflines and a sprawling, open floor plan make this four bedroom, contemporary home a mini architectural masterpiece.

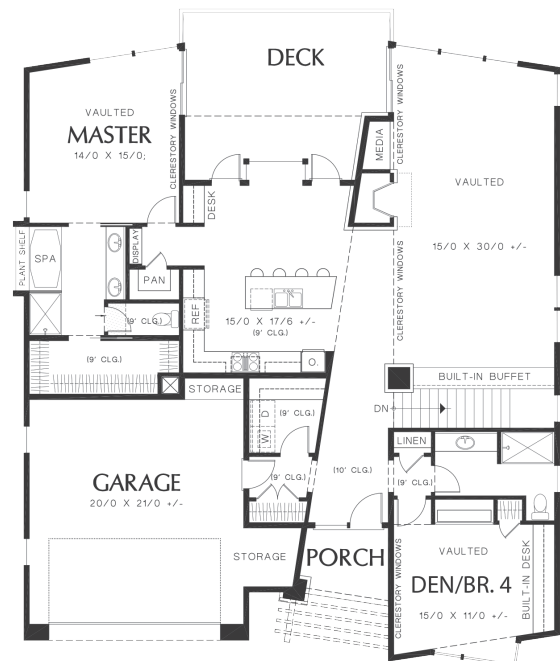
Dimensions

WIDTH	DEPTH
50	59

Designs, Floor Plans & Images © Mascord Design Associates



LOWER FLOOR



MAIN FLOOR

Contact us today for a price quote or details:
linwoodhomes.com/ask • 1-888-546-9663

POST & BEAM: The Post & Beam Home Package includes full custom concept design, construction plans, technical support, and all the materials required to build the structure of your home to the lock-up stage.

