

The *Lochlin*

POST & BEAM



Square Footage

| | |
|---------------------------|-------------|
| MAIN FLOOR | 1530 |
| UPPER FLOOR | 862 |
| UNFINISHED/ BONUS AREA | 0 |
| TOTAL LIVING AREA | 2392 |
| GARAGE | 402 |
| COVERED ENTRY/PORCH | 85 |
| BALCONY/ DECK | 0 |
| TOTAL AREA | 2879 |

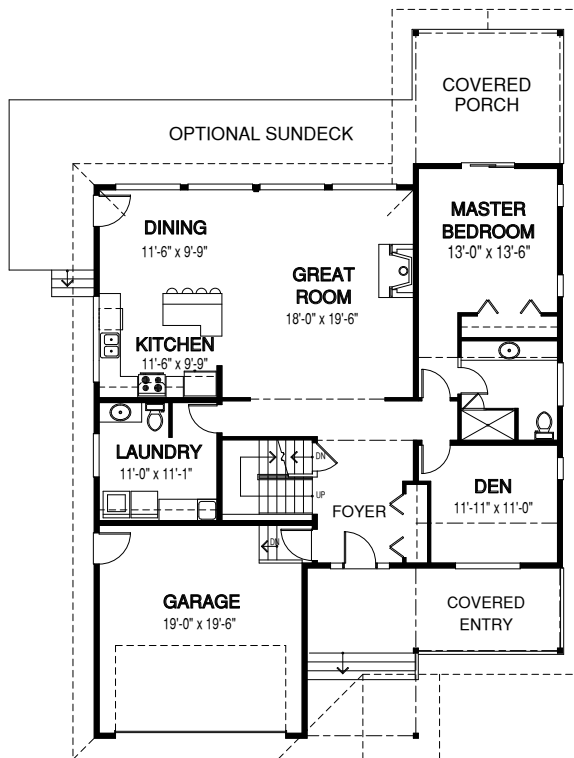
Dimensions

| | |
|-------|-------|
| WIDTH | DEPTH |
| 44 | 67 |

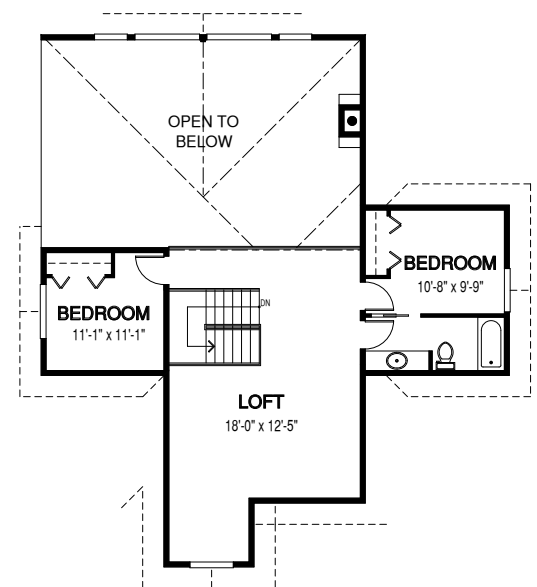
With its open concept floor plan, complete with a main floor master bedroom and elegant vaulted ceilings, the Lochlin is the perfect family home for entertaining.

Designs, Images & Plans © Linwood Homes Ltd.

MAIN FLOOR



UPPER FLOOR



Contact us today for a price quote or details: linwoodhomes.com/ask • 1-888-546-9663

POST & BEAM: The Post & Beam Home Package includes full custom concept design, construction plans, technical support, and all the materials required to build the structure of your home to the lock-up stage.