

# The *Strathcona*

**POST & BEAM**



## Square Footage

MAIN FLOOR	1528
UPPER FLOOR	939
UNFINISHED/ BONUS AREA	0
<b>TOTAL LIVING AREA</b>	<b>2467</b>
GARAGE	0
COVERED ENTRY/PORCH	98
BALCONY/ DECK	0
<b>TOTAL AREA</b>	<b>2565</b>

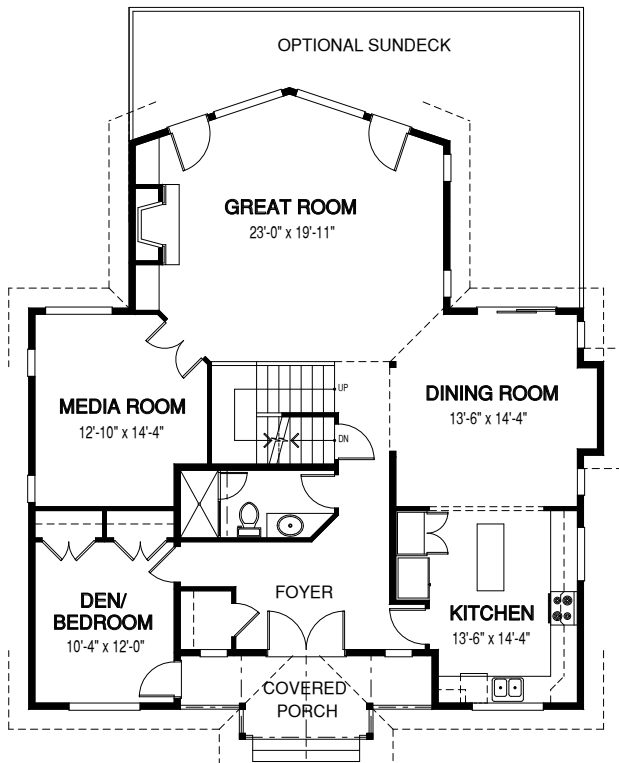
## Dimensions

WIDTH	DEPTH
43	49

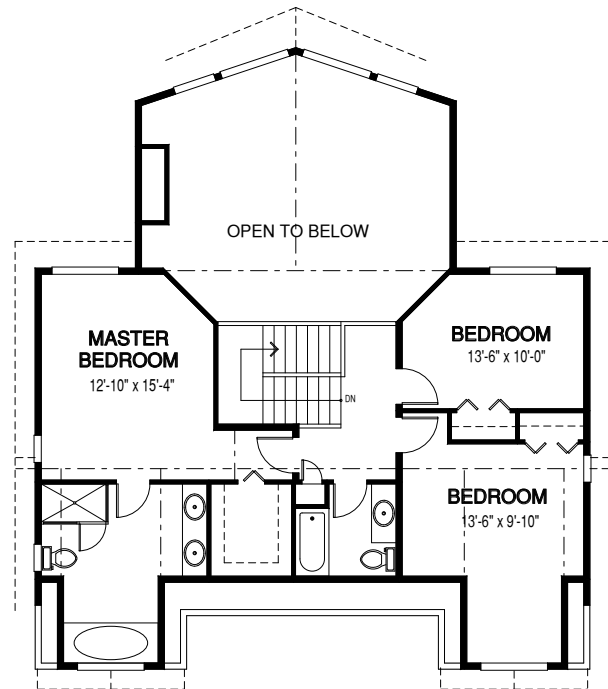
With its dramatic rooflines and impressive curb appeal, the Strathcona home package suits both country lanes and suburban streets.

Designs, Images & Plans © Linwood Homes Ltd.

### MAIN FLOOR



### UPPER FLOOR



Contact us today for a price quote or details: [linwoodhomes.com/ask](http://linwoodhomes.com/ask) • 1-888-546-9663

**POST & BEAM:** The Post & Beam Home Package includes full custom concept design, construction plans, technical support, and all the materials required to build the structure of your home to the lock-up stage.