

The *Selwyn*

POST & BEAM



Square Footage

MAIN FLOOR	1368
UPPER FLOOR	1328
UNFINISHED/ BONUS AREA	0
TOTAL LIVING AREA	2696
GARAGE	454
COVERED ENTRY/PORCH	284
BALCONY/ DECK	406
TOTAL AREA	3840

Dimensions

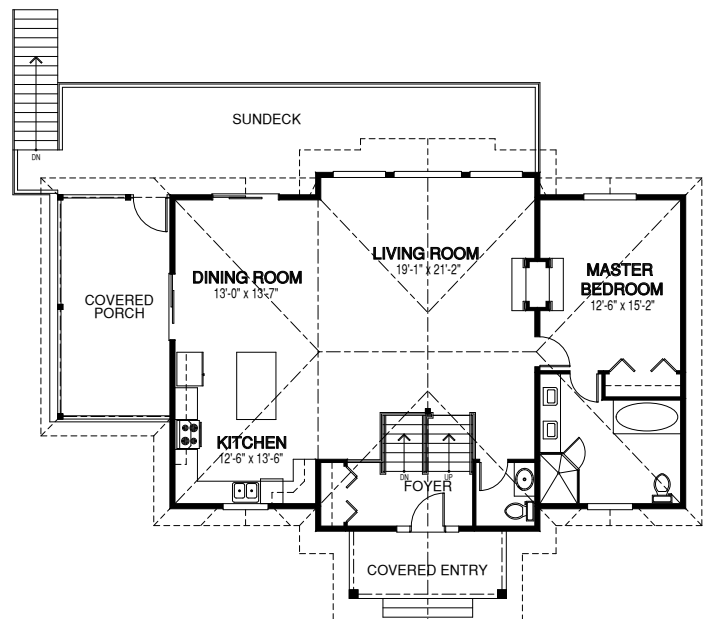
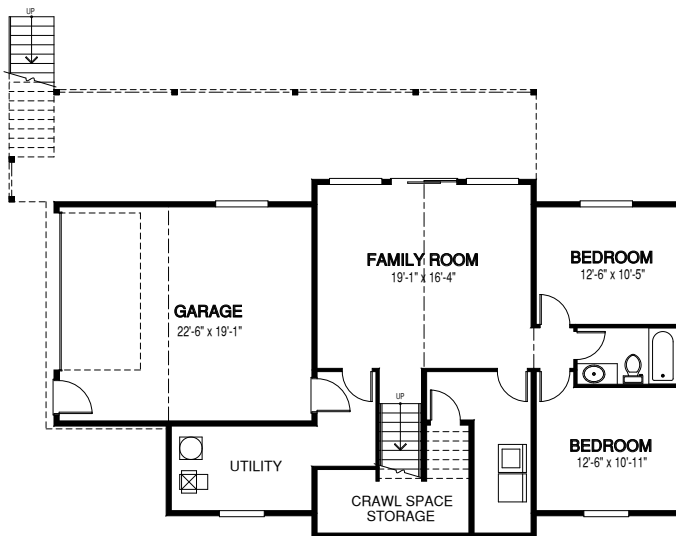
WIDTH	DEPTH
56	38

This charming Linwood home package features expansive open living areas with beautiful exposed glulam beams throughout. The main floor includes a spacious master bedroom suite, and a large covered porch that extends the living space outdoors.

Designs, Images & Plans © Linwood Homes Ltd.

MAIN FLOOR

UPPER FLOOR



Contact us today for a price quote or details: linwoodhomes.com/ask • 1-888-546-9663

POST & BEAM: The Post & Beam Home Package includes full custom concept design, construction plans, technical support, and all the materials required to build the structure of your home to the lock-up stage.