

# The *Rising River*

**POST & BEAM**



## Square Footage

MAIN FLOOR	999
UPPER FLOOR	465
UNFINISHED/ BONUS AREA	0
<b>TOTAL LIVING AREA</b>	<b>1464</b>
GARAGE	0
COVERED ENTRY/PORCH	20
BALCONY/ DECK	0
<b>TOTAL AREA</b>	<b>1484</b>

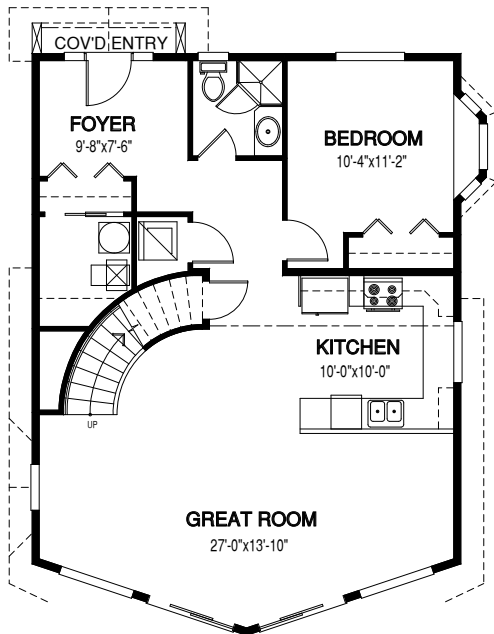
## Dimensions

WIDTH	DEPTH
28	38

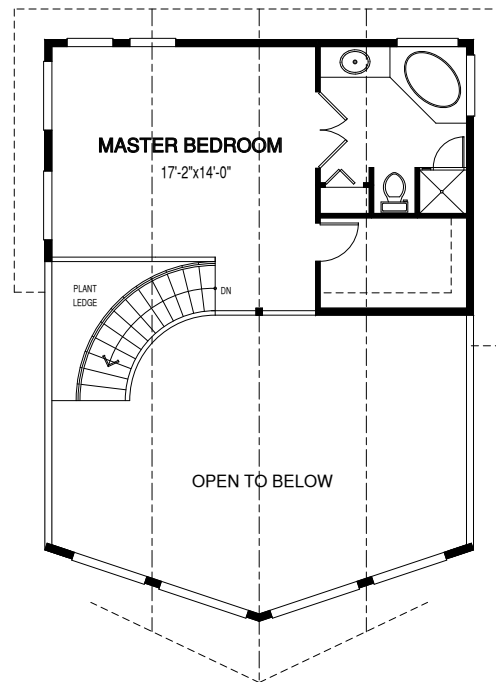
This float home design includes the space for a sweeping staircase and elegant loft. Linwood has the expertise to create any float home package from the unique ideas you may have in mind.

Designs, Images & Plans © Linwood Homes Ltd.

### MAIN FLOOR



### UPPER FLOOR



Contact us today for a price quote or details: [linwoodhomes.com/ask](https://linwoodhomes.com/ask) • 1-888-546-9663

**POST & BEAM:** The Post & Beam Home Package includes full custom concept design, construction plans, technical support, and all the materials required to build the structure of your home to the lock-up stage.