

The *Rainier*

POST & BEAM



Square Footage

MAIN FLOOR	1039
UPPER FLOOR	357
UNFINISHED/ BONUS AREA	0
TOTAL LIVING AREA	1396
GARAGE	0
COVERED ENTRY/PORCH	0
BALCONY/ DECK	0
TOTAL AREA	1396

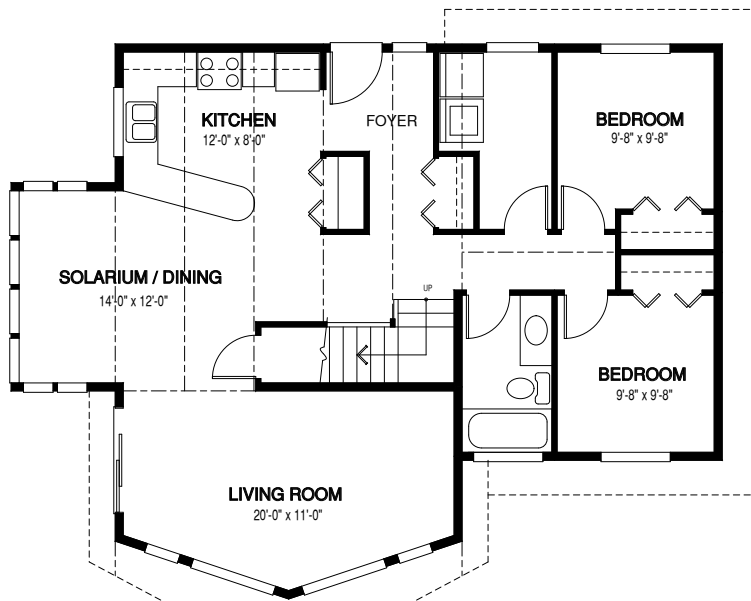
Dimensions

WIDTH	DEPTH
41	32

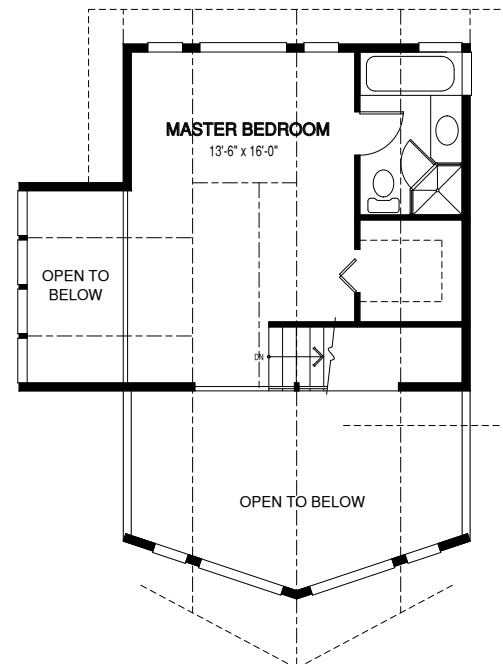
A traditional prow-style cedar home with optional walk-out basement, the Rainier is an ideal post and beam home. The floor plan can be fully customized.

Designs, Images & Plans © Linwood Homes Ltd.

MAIN FLOOR



UPPER FLOOR



Contact us today for a price quote or details: linwoodhomes.com/ask • 1-888-546-9663

POST & BEAM: The Post & Beam Home Package includes full custom concept design, construction plans, technical support, and all the materials required to build the structure of your home to the lock-up stage.