

The *Parkwood*

TRADITIONAL



Square Footage

MAIN FLOOR	1460
UPPER FLOOR	1249
UNFINISHED/ BONUS AREA	0
TOTAL LIVING AREA	2709
GARAGE	0
COVERED ENTRY/ PORCH	439
BALCONY/ DECK	0
TOTAL AREA	3148

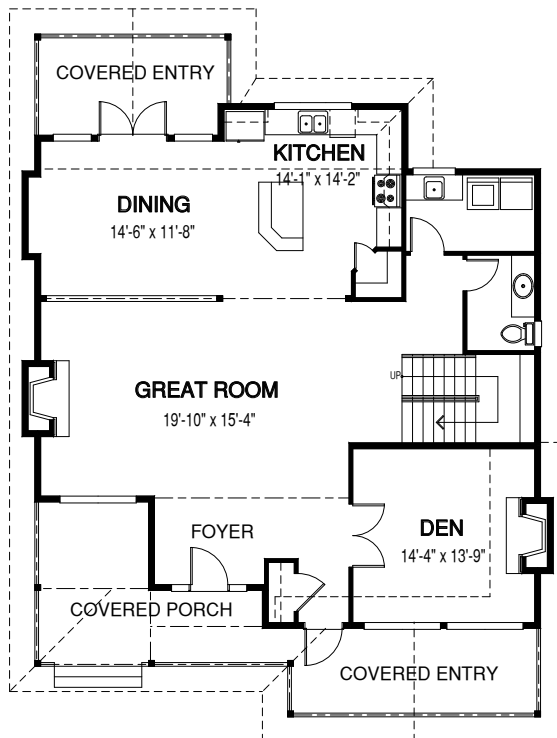
Dimensions

WIDTH	DEPTH
41	50

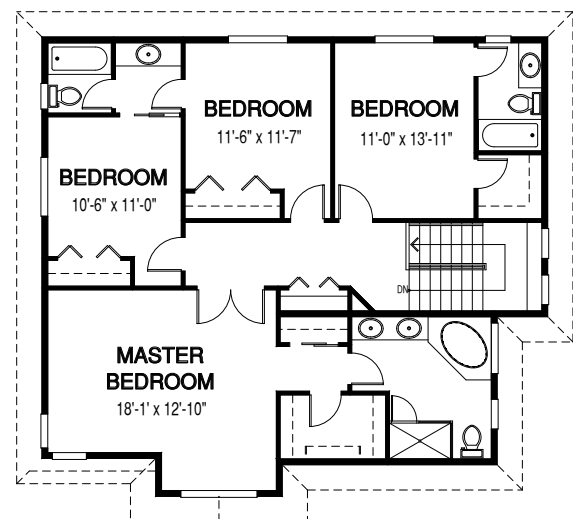
The Parkwood is a wonderful family home. It boasts four bedrooms and a den as well as large open concept living space, perfect for entertaining and family gatherings.

Designs, Images & Plans © Linwood Homes Ltd.

MAIN FLOOR



UPPER FLOOR



Contact us today for a price quote or details: linwoodhomes.com/ask • 1-888-546-9663

TRADITIONAL: The Traditional Home Package includes custom design, construction plans and all the materials required to build the structure of the home to the lock-up stage.