

The *Fairmont 1*

POST & BEAM



Square Footage

MAIN FLOOR	1201
UPPER FLOOR	531
UNFINISHED/ BONUS AREA	0
TOTAL LIVING AREA	1732
GARAGE	0
COVERED ENTRY/PORCH	96
BALCONY/ DECK	0
TOTAL AREA	1828

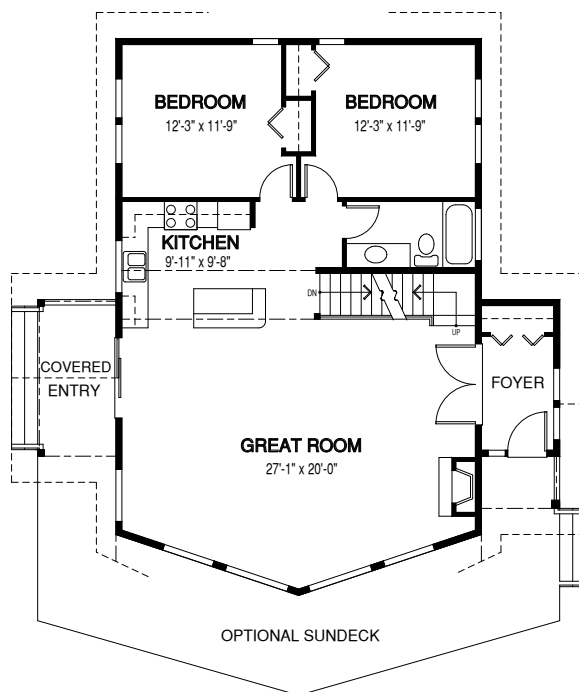
Dimensions

WIDTH	DEPTH
40	43

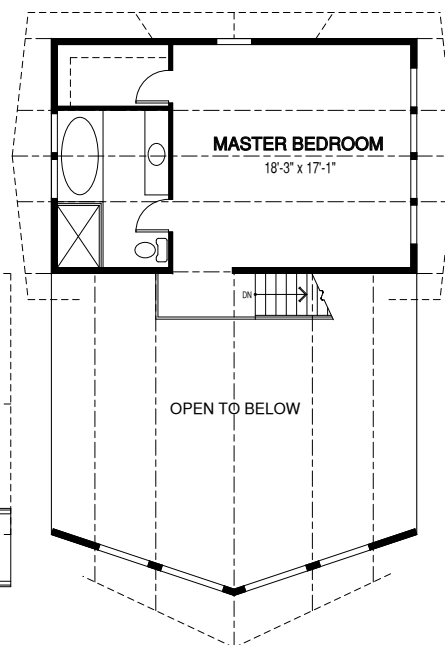
The Fairmont 1, Linwood's prize model home in Calgary, AB, is a timeless post and beam home design. The upstairs loft features a luxurious master bedroom.

Designs, Images & Plans © Linwood Homes Ltd.

MAIN FLOOR



UPPER FLOOR



Contact us today for a price quote or details: linwoodhomes.com/ask • 1-888-546-9663

POST & BEAM: The Post & Beam Home Package includes full custom concept design, construction plans, technical support, and all the materials required to build the structure of your home to the lock-up stage.