

# The *Dundarave*

## POST & BEAM



With its impressive windows and rooflines, the Dundarave is a desirable cedar home package. The wrap-around covered porch is another feature that makes this home design unique among new home plans.

### Square Footage

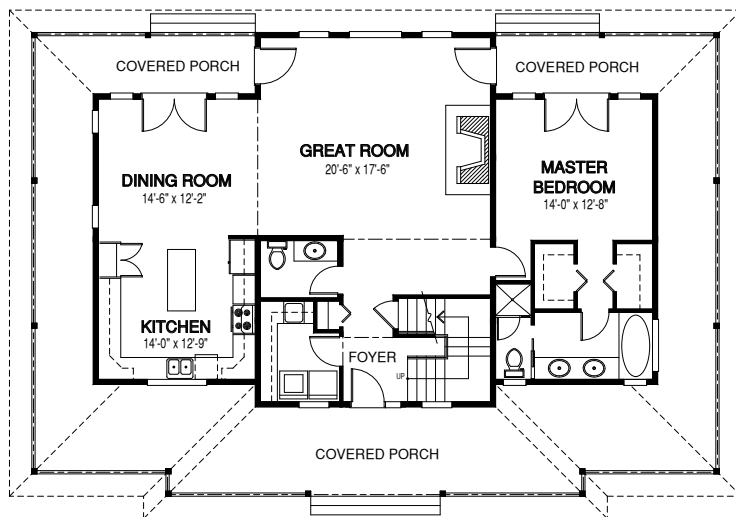
MAIN FLOOR	1474
UPPER FLOOR	901
UNFINISHED/ BONUS AREA	0
<b>TOTAL LIVING AREA</b>	<b>2375</b>
GARAGE	0
COVERED ENTRY/PORCH	1030
BALCONY/ DECK	0
<b>TOTAL AREA</b>	<b>3405</b>

### Dimensions

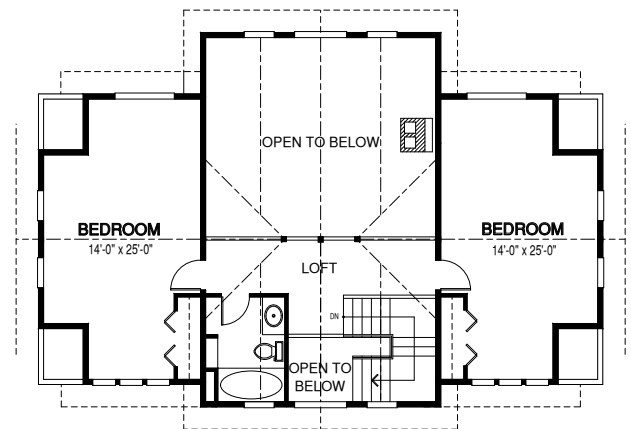
WIDTH	DEPTH
62	42

Designs, Images & Plans © Linwood Homes Ltd.

### MAIN FLOOR



### UPPER FLOOR



Contact us today for a price quote or details: [linwoodhomes.com/ask](https://www.linwoodhomes.com/ask) • 1-888-546-9663

**POST & BEAM:** The Post & Beam Home Package includes full custom concept design, construction plans, technical support, and all the materials required to build the structure of your home to the lock-up stage.