

The *Montcalm 1*

POST & BEAM



Square Footage

| | |
|---------------------------|-------------|
| MAIN FLOOR | 1665 |
| UPPER FLOOR | 413 |
| UNFINISHED/ BONUS AREA | 0 |
| TOTAL LIVING AREA | 2078 |
| GARAGE | 0 |
| COVERED ENTRY/PORCH | 182 |
| BALCONY/ DECK | 0 |
| TOTAL AREA | 2260 |

Dimensions

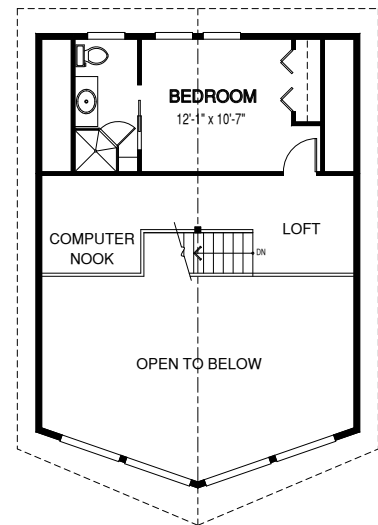
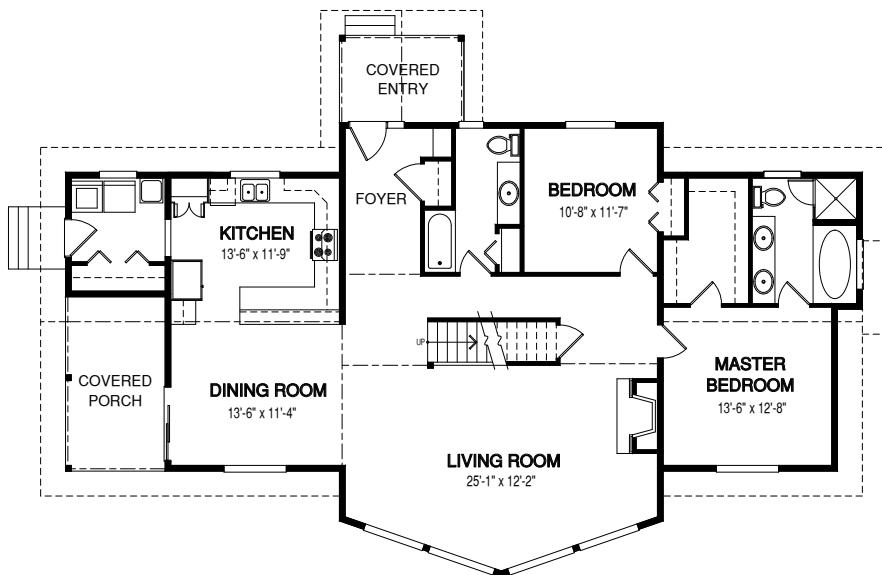
| | |
|-------|-------|
| WIDTH | DEPTH |
| 64 | 44 |

The Montcalm 1 is as beautiful in design as the vantage point from its incredible living room. This innovative home package is ideal for any lot with a view.

Designs, Images & Plans © Linwood Homes Ltd.

MAIN FLOOR

UPPER FLOOR



Contact us today for a price quote or details: linwoodhomes.com/ask • 1-888-546-9663

POST & BEAM: The Post & Beam Home Package includes full custom concept design, construction plans, technical support, and all the materials required to build the structure of your home to the lock-up stage.