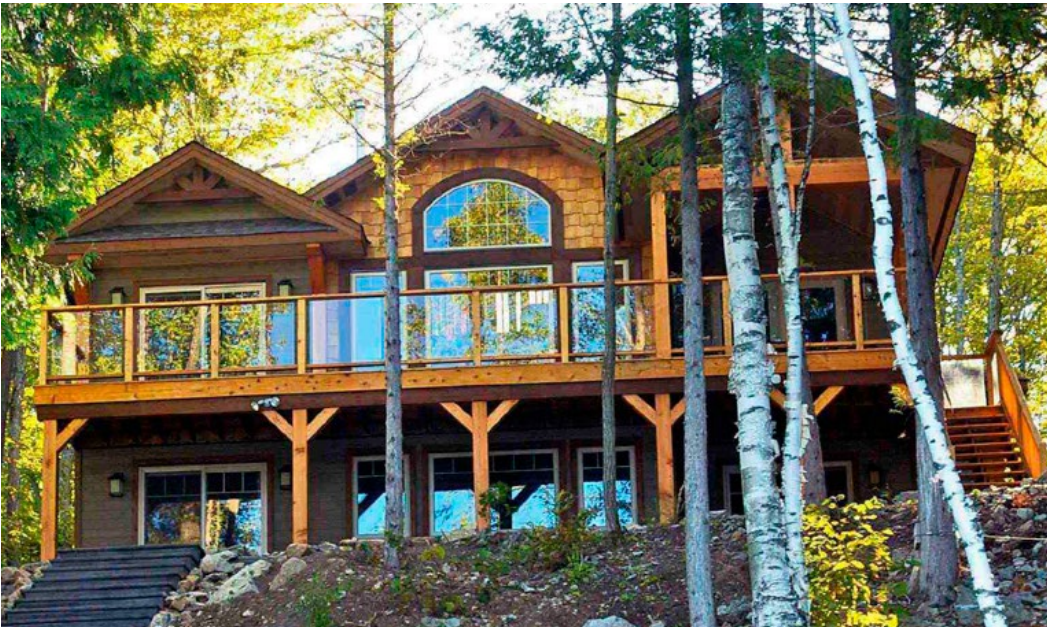


The *Birchcliff*

POST & BEAM



The new Birchcliff home kit offers the same well-planned space as Linwood's popular Birchview model. It has an attached garage, and the room to install a double-sided fireplace between the living area and master bedroom.

Square Footage

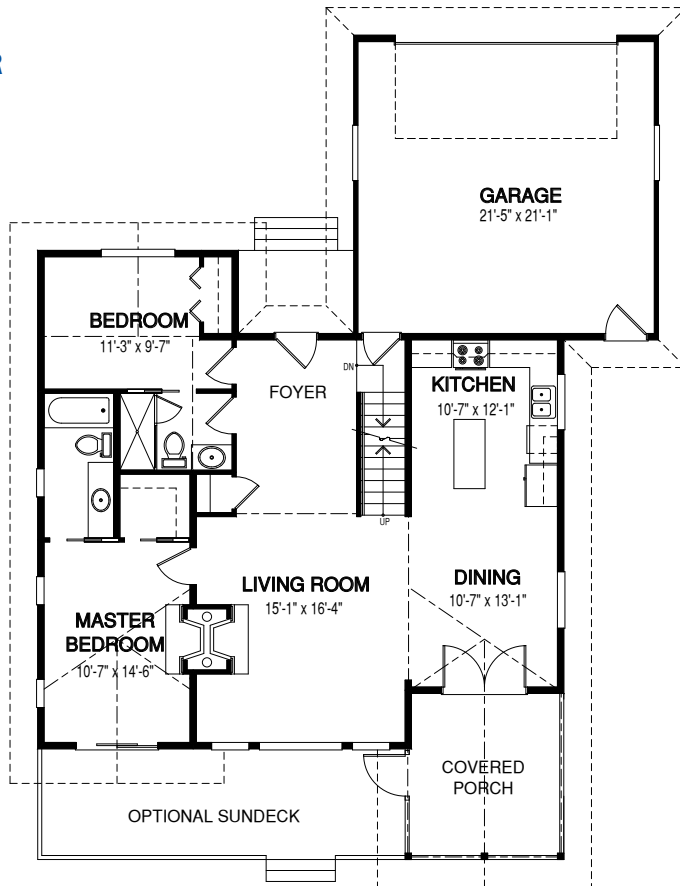
MAIN FLOOR	1183
UPPER FLOOR	160
UNFINISHED/ BONUS AREA	0
TOTAL LIVING AREA	1343
GARAGE	0
COVERED ENTRY/PORCH	136
BALCONY/ DECK	0
TOTAL AREA	1479

Dimensions

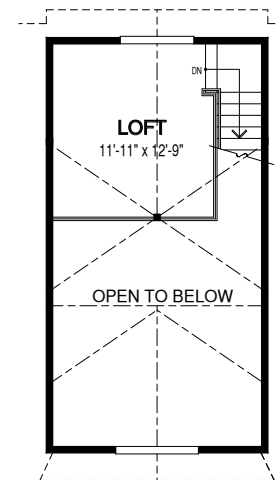
WIDTH	DEPTH
45	60

Designs, Images & Plans © Linwood Homes Ltd.

MAIN FLOOR



UPPER FLOOR



Contact us today for a price quote or details: linwoodhomes.com/ask • 1-888-546-9663

POST & BEAM: The Post & Beam Home Package includes full custom concept design, construction plans, technical support, and all the materials required to build the structure of your home to the lock-up stage.