

The *Southwood 1*

POST & BEAM



Square Footage

MAIN FLOOR	939
UPPER FLOOR	338
UNFINISHED/ BONUS AREA	0
TOTAL LIVING AREA	1277
GARAGE	0
COVERED ENTRY/PORCH	0
BALCONY/ DECK	0
TOTAL AREA	1277

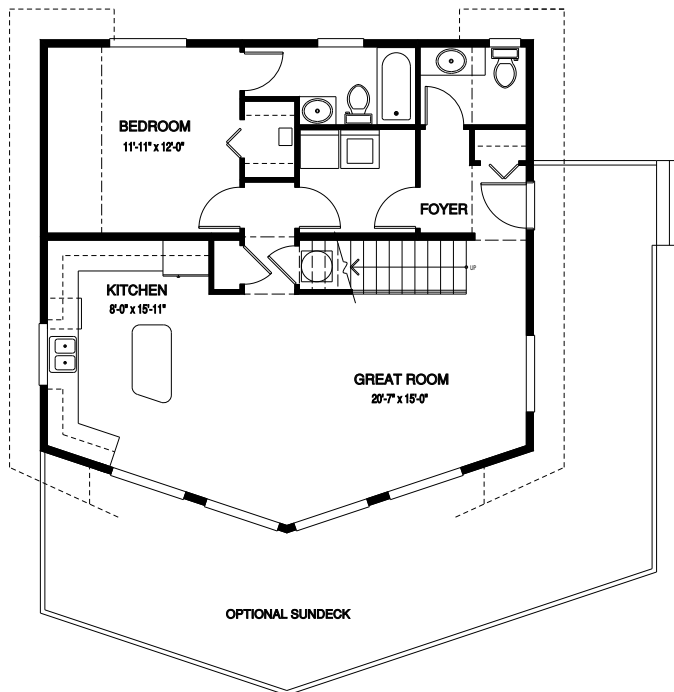
Dimensions

WIDTH	DEPTH
32	32

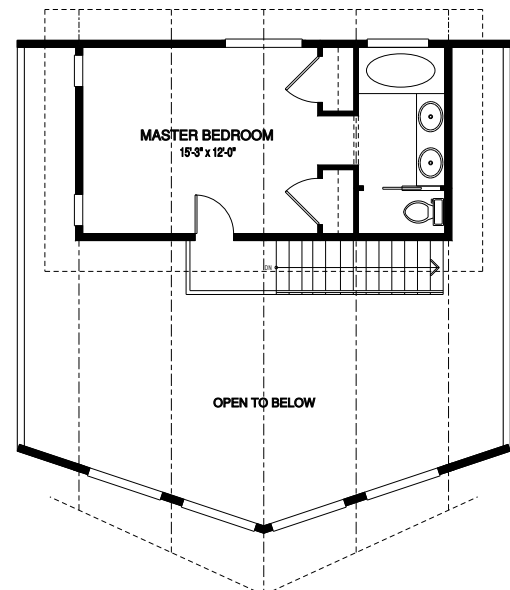
This inviting cedar home offers a spacious, private master bedroom suite, as well as an ingenious kitchen layout.

Designs, Images & Plans © Linwood Homes Ltd.

MAIN FLOOR



UPPER FLOOR



Contact us today for a price quote or details: linwoodhomes.com/ask • 1-888-546-9663

POST & BEAM: The Post & Beam Home Package includes full custom concept design, construction plans, technical support, and all the materials required to build the structure of your home to the lock-up stage.