

The *Moresby*

POST & BEAM



Square Footage

MAIN FLOOR	339
UPPER FLOOR	1123
UNFINISHED/ BONUS AREA	0
TOTAL LIVING AREA	1462
GARAGE	0
COVERED ENTRY/PORCH	86
BALCONY/ DECK	0
TOTAL AREA	1548

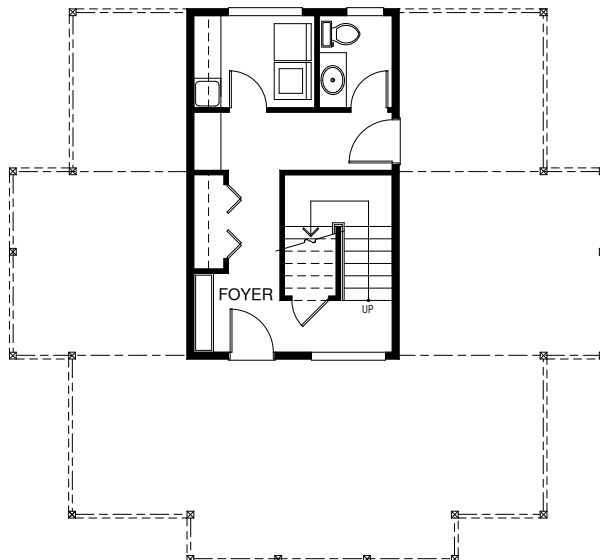
Dimensions

WIDTH	DEPTH
41	38

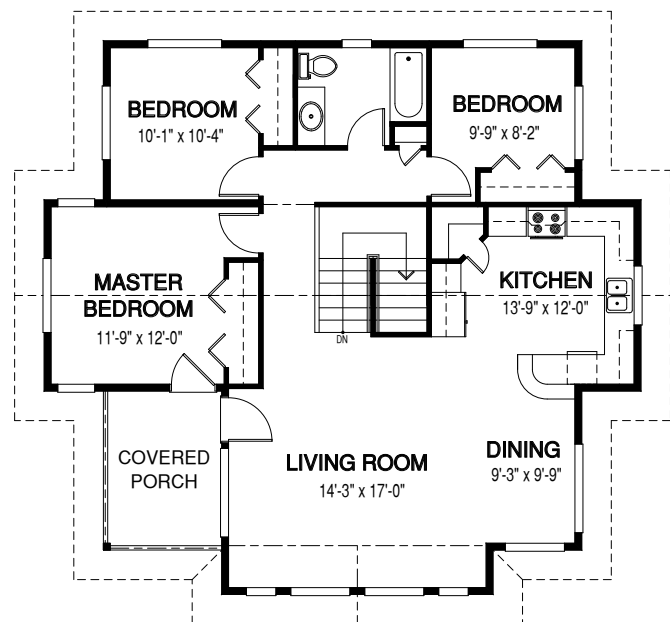
The Moresby is the perfect coastal home. The open floor plan and covered lanai make it a great space for entertaining friends and family.

Designs, Images & Plans © Linwood Homes Ltd.

MAIN FLOOR



UPPER FLOOR



Contact us today for a price quote or details: linwoodhomes.com/ask • 1-888-546-9663

POST & BEAM: The Post & Beam Home Package includes full custom concept design, construction plans, technical support, and all the materials required to build the structure of your home to the lock-up stage.