

The *Lynden*

POST & BEAM



This home design has a great room with the space for an astounding fireplace, as well as wall of windows. It's an outstanding cedar, post and beam plan.

Square Footage

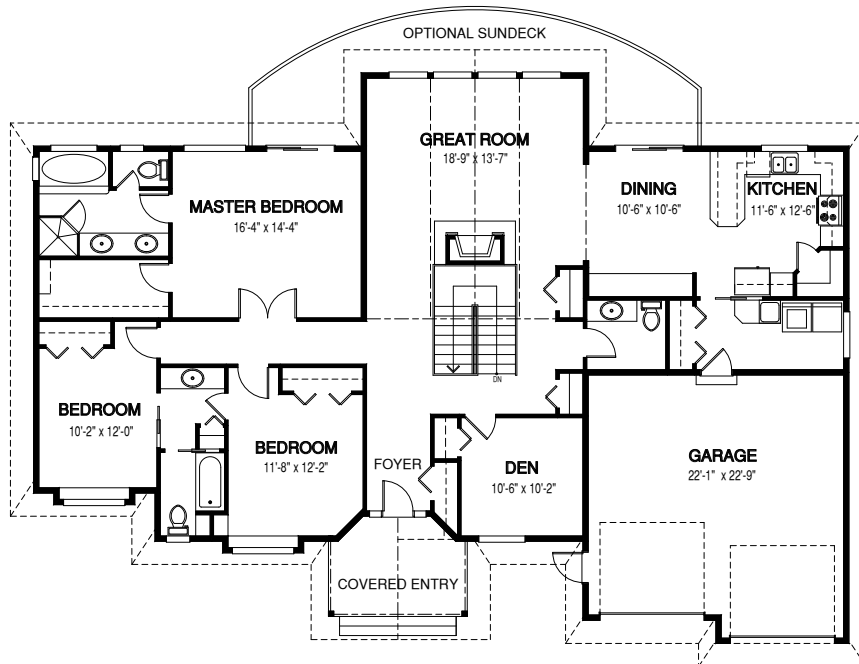
MAIN FLOOR	2148
UPPER FLOOR	0
UNFINISHED/ BONUS AREA	0
TOTAL LIVING AREA	2148
GARAGE	504
COVERED ENTRY/PORCH	95
BALCONY/ DECK	0
TOTAL AREA	2747

Dimensions

WIDTH	DEPTH
71	50

Designs, Images & Plans © Linwood Homes Ltd.

MAIN FLOOR



Contact us today for a price quote or details: linwoodhomes.com/ask • 1-888-546-9663

POST & BEAM: The Post & Beam Home Package includes full custom concept design, construction plans, technical support, and all the materials required to build the structure of your home to the lock-up stage.