

# The *Liberty 2*

**POST & BEAM**



A variation on the popular Liberty home design, the Liberty 2 offers an upper floor. This outstanding cedar home features a large, open concept loft.

## Square Footage

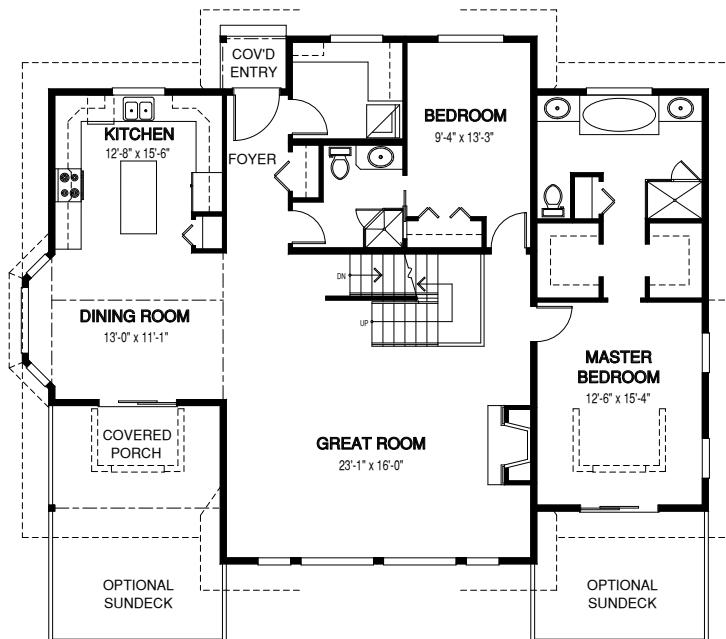
|                           |             |
|---------------------------|-------------|
| MAIN FLOOR                | 1685        |
| UPPER FLOOR               | 239         |
| UNFINISHED/<br>BONUS AREA | 0           |
| TOTAL LIVING AREA         | <b>1924</b> |
| GARAGE                    | 0           |
| COVERED ENTRY/PORCH       | 124         |
| BALCONY/<br>DECK          | 0           |
| TOTAL AREA                | <b>2048</b> |

## Dimensions

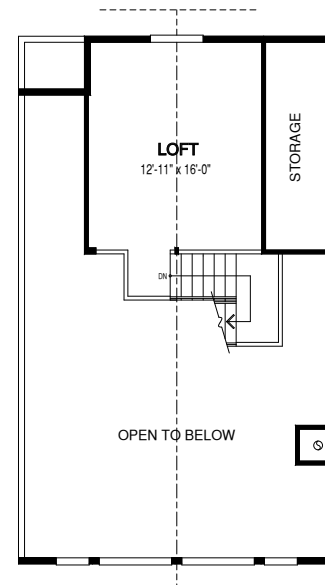
|       |       |
|-------|-------|
| WIDTH | DEPTH |
| 52    | 40    |

Designs, Images & Plans © Linwood Homes Ltd.

## MAIN FLOOR



## UPPER FLOOR



Contact us today for a price quote or details: [linwoodhomes.com/ask](https://linwoodhomes.com/ask) • 1-888-546-9663

**POST & BEAM:** The Post & Beam Home Package includes full custom concept design, construction plans, technical support, and all the materials required to build the structure of your home to the lock-up stage.