

# The *Kingfisher 1*

**POST & BEAM**



## Square Footage

MAIN FLOOR	748
UPPER FLOOR	554
UNFINISHED/ BONUS AREA	0
TOTAL LIVING AREA	<b>1302</b>
GARAGE	0
COVERED ENTRY/PORCH	236
BALCONY/ DECK	0
TOTAL AREA	<b>1538</b>

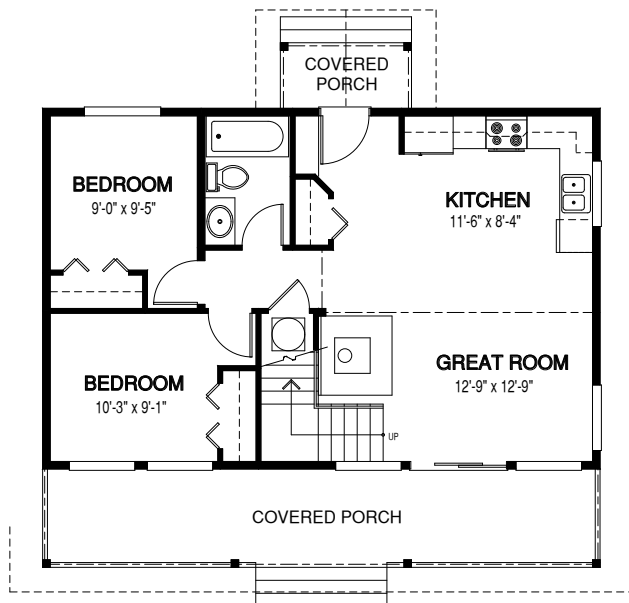
## Dimensions

WIDTH	DEPTH
34	32

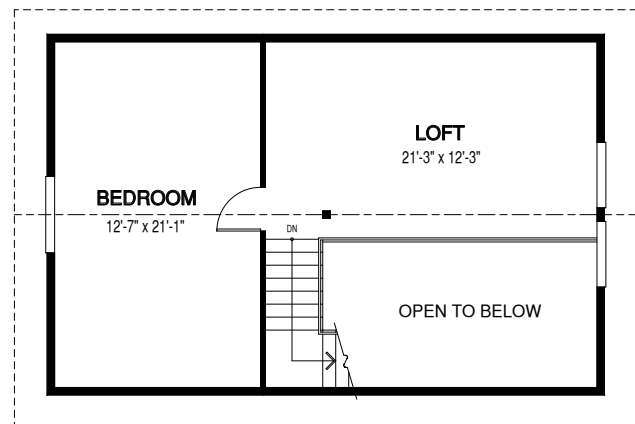
At 1302 sq. ft., the Kingfisher 1 cedar home kit is an ideal vacation retreat. This home design is noted for its large rooms and impressive loft.

Designs, Images & Plans © Linwood Homes Ltd.

### MAIN FLOOR



### UPPER FLOOR



Contact us today for a price quote or details: [linwoodhomes.com/ask](https://linwoodhomes.com/ask) • 1-888-546-9663

**POST & BEAM:** The Post & Beam Home Package includes full custom concept design, construction plans, technical support, and all the materials required to build the structure of your home to the lock-up stage.