

# The Cameron

## POST & BEAM



### Square Footage

MAIN FLOOR	1958
UPPER FLOOR	1180
UNFINISHED/ BONUS AREA	0
<b>TOTAL LIVING AREA</b>	<b>3138</b>
<b>GARAGE</b>	<b>672</b>
COVERED ENTRY/PORCH	52
BALCONY/ DECK	52
<b>TOTAL AREA</b>	<b>3914</b>

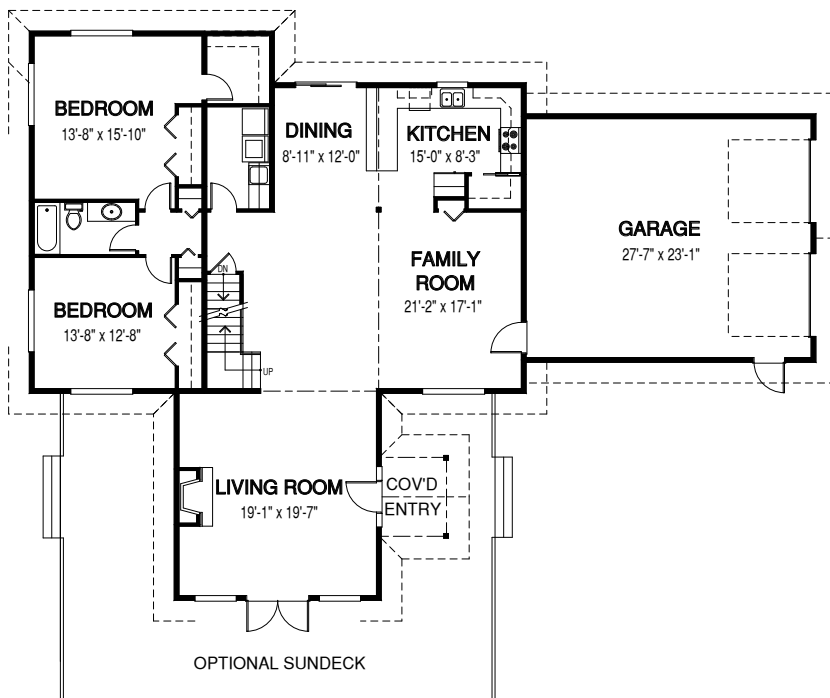
### Dimensions

WIDTH	DEPTH
76	55

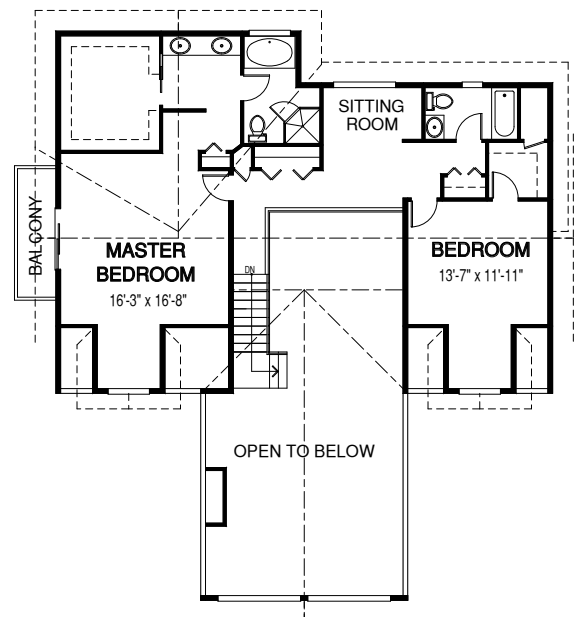
The incredible, front windows in this home package enable daylight to filter inside. Due to its open concept, all gathering spaces benefit from this natural lighting effect.

Designs, Images & Plans © Linwood Homes Ltd.

### MAIN FLOOR



### UPPER FLOOR



Contact us today for a price quote or details: [linwoodhomes.com/ask](https://linwoodhomes.com/ask) • 1-888-546-9663

**POST & BEAM:** The Post & Beam Home Package includes full custom concept design, construction plans, technical support, and all the materials required to build the structure of your home to the lock-up stage.