

# The Carmel

## POST & BEAM



The Carmel is a true gem among new homes. With a floor plan that includes a central great room, 2 bedrooms and 2 bathrooms, it makes an ideal vacation home.

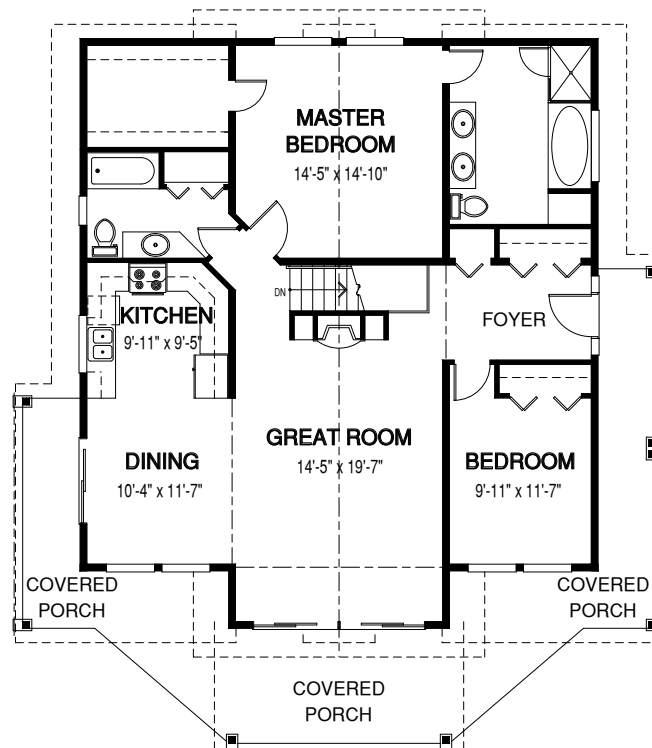
### Square Footage

MAIN FLOOR	1393
UPPER FLOOR	0
UNFINISHED/ BONUS AREA	0
TOTAL LIVING AREA	<b>1393</b>
GARAGE	0
COVERED ENTRY/PORCH	369
BALCONY/ DECK	0
TOTAL AREA	<b>1762</b>

### Dimensions

WIDTH	DEPTH
44	49

Designs, Images & Plans © Linwood Homes Ltd.



MAIN FLOOR



Contact us today for a price quote or details: [linwoodhomes.com/ask](https://linwoodhomes.com/ask) • 1-888-546-9663

**POST & BEAM:** The Post & Beam Home Package includes full custom concept design, construction plans, technical support, and all the materials required to build the structure of your home to the lock-up stage.