

The *Bayside 2*

TRADITIONAL



Square Footage

MAIN FLOOR	1154
UPPER FLOOR	880
UNFINISHED/ BONUS AREA	0
TOTAL LIVING AREA	2034
GARAGE	447
COVERED ENTRY/PORCH	101
BALCONY/ DECK	0
TOTAL AREA	2582

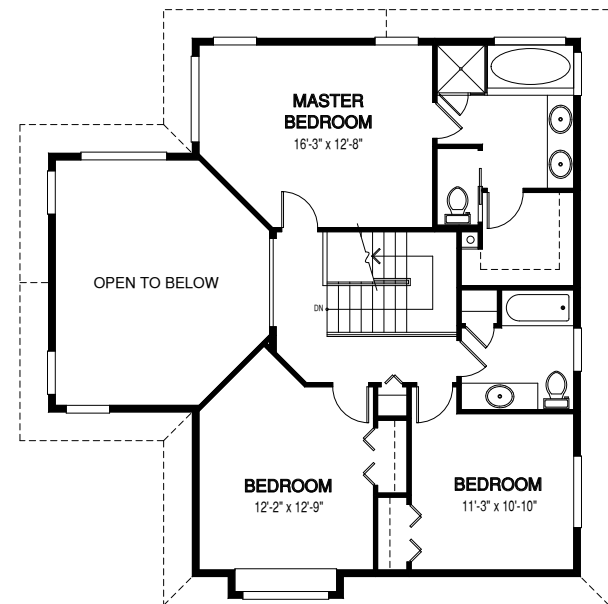
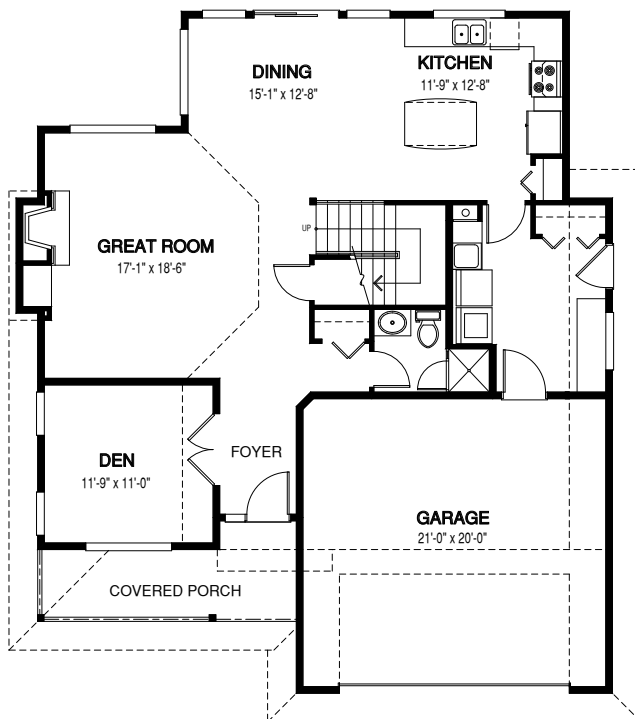
Dimensions

WIDTH	DEPTH
42	48

The popularity of the Bayside 1 home package design prompted this design, which offers a magnificent vaulted ceiling in the great room.

Designs, Images & Plans © Linwood Homes Ltd.

MAIN FLOOR



UPPER FLOOR



Contact us today for a price quote or details: linwoodhomes.com/ask • 1-888-546-9663

TRADITIONAL: The Traditional Home Package includes custom design, construction plans and all the materials required to build the structure of the home to the lock-up stage.