

# The *Windwood*

**POST & BEAM**



## Square Footage

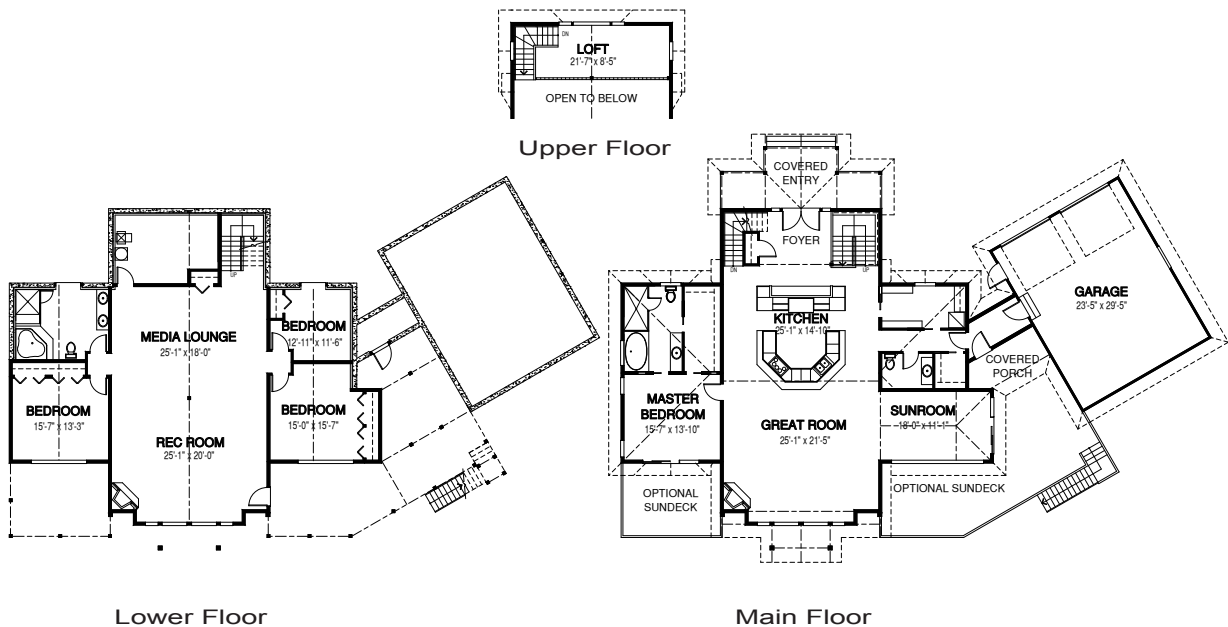
MAIN FLOOR	2291
UPPER FLOOR	191
UNFINISHED/ BONUS AREA	2291
TOTAL LIVING AREA	<b>4773</b>
GARAGE	718
COVERED ENTRY/PORCH	272
BALCONY/ DECK	0
TOTAL AREA	<b>5763</b>

## Dimensions

WIDTH	DEPTH
96	65

This elegant post and beam cedar home allows for spectacular views. You'll enjoy the scenery year-round with this unique floor plan.

Designs, Images & Plans © Linwood Homes Ltd.



Contact us today for a price quote or details: [linwoodhomes.com/ask](https://linwoodhomes.com/ask) • 1-888-546-9663

**POST & BEAM:** The Post & Beam Home Package includes full custom concept design, construction plans, technical support, and all the materials required to build the structure of your home to the lock-up stage.