

The *Bryson Bay*

POST & BEAM



Square Footage

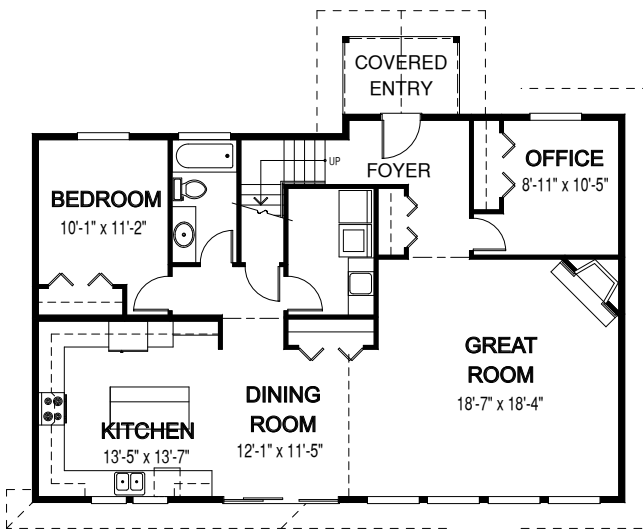
MAIN FLOOR	1333
UPPER FLOOR	813
UNFINISHED/ BONUS AREA	0
TOTAL LIVING AREA	2146
GARAGE	0
COVERED ENTRY/PORCH	54
BALCONY/ DECK	0
TOTAL AREA	2200

Dimensions

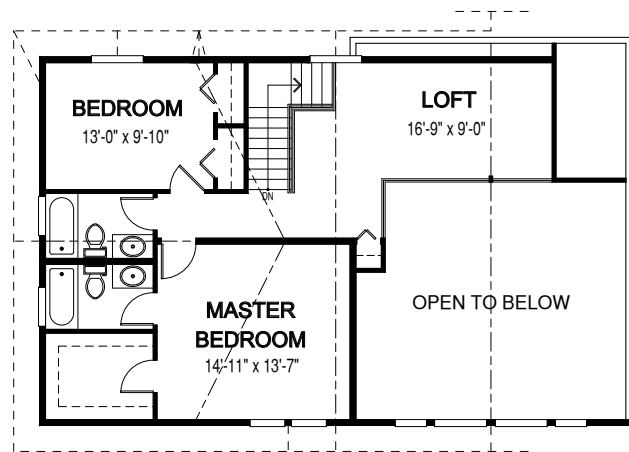
WIDTH	DEPTH
46	36

The Bryson Bay is an award-winning post and beam home design, outstanding as a unique home package due to an inspired floor plan and use of quality building materials, such as Western Red Cedar.

Designs, Images & Plans © Linwood Homes Ltd.



Main Floor



Upper Floor



Contact us today for a price quote or details: linwoodhomes.com/ask • 1-888-546-9663

POST & BEAM: The Post & Beam Home Package includes full custom concept design, construction plans, technical support, and all the materials required to build the structure of your home to the lock-up stage.