

The *Thorne*

TIMBER FRAME & LOG



Square Footage

MAIN FLOOR	1855
UPPER FLOOR	—
UNFINISHED/ BONUS AREA	—
TOTAL LIVING AREA	1855
GARAGE	—
COVERED ENTRY/PORCH	326
BALCONY/ DECK	—
TOTAL AREA	2181

Dimensions

WIDTH	DEPTH
56	47

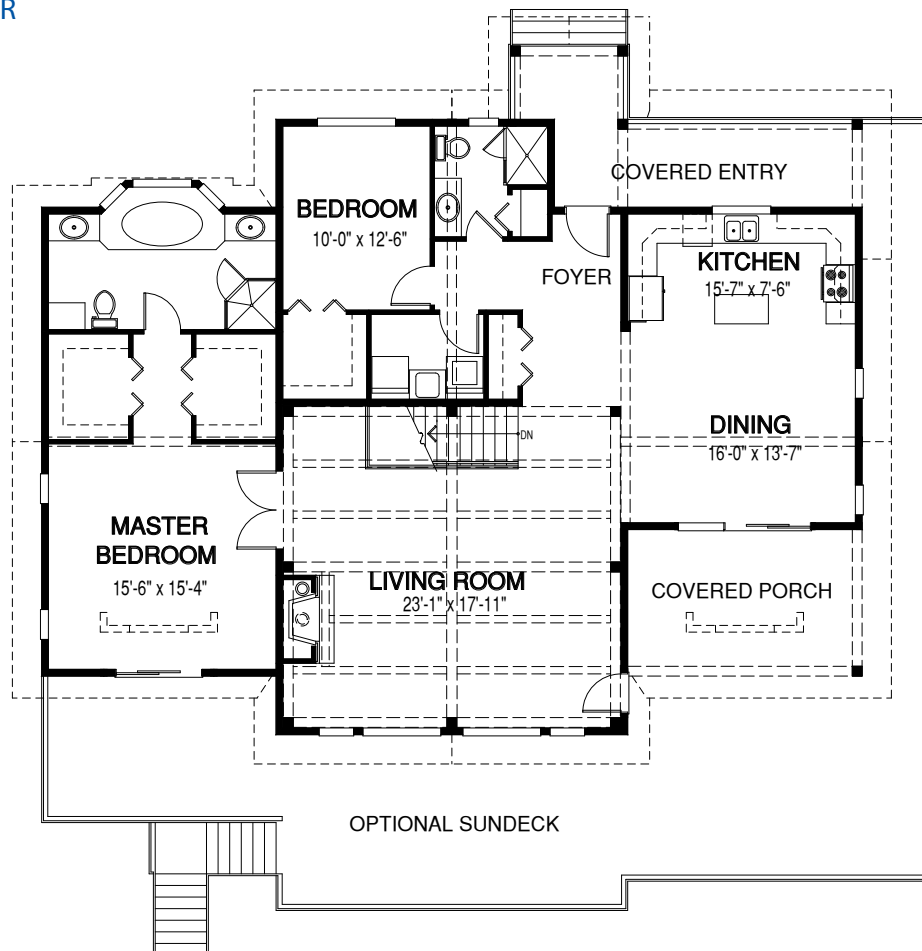
Due to the Thorne's magnificent timber design, the great room and open concept spaces inspire awe. There are so many appealing features – from the ceiling details to the optional wrap-around deck.



See page 2 for floor plan



MAIN FLOOR



Contact us today for a price quote or details: linwoodhomes.com • 1-888-546-9663

TIMBER FRAME & LOG: This home package includes concept design, construction plans, technical support, and all the premium quality materials required to build the structure of this home to the lock-up stage. Materials include select-grade specialty timbers or logs, hi-line export-grade lumber, and an extensive choice of siding, roofing and energy-efficient windows. This design features specialized construction. It includes full custom design to meet site-specific needs.