

# The *Canterbury*

TIMBER FRAME & LOG



## Square Footage

MAIN FLOOR	1520
UPPER FLOOR	650
UNFINISHED/ BONUS AREA	—
TOTAL LIVING AREA	<b>2170</b>
GARAGE	—
COVERED ENTRY/PORCH	—
BALCONY/ DECK	—
TOTAL AREA	<b>2170</b>

## Dimensions

WIDTH	DEPTH
36	48

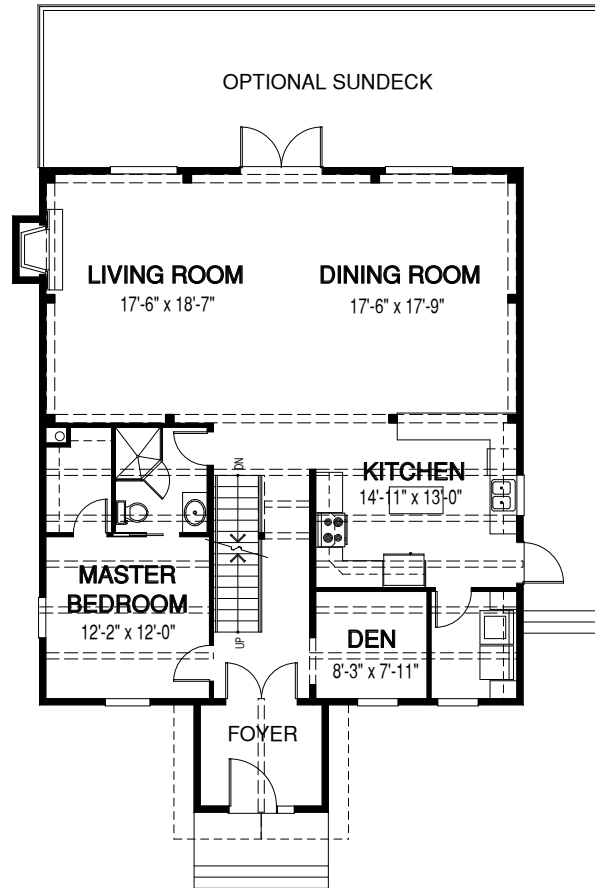
An inspired farmhouse-style retreat, the Canterbury offers living space to suit all needs. The great room is the focal point of this home, with its magnificent hammer beam truss design.



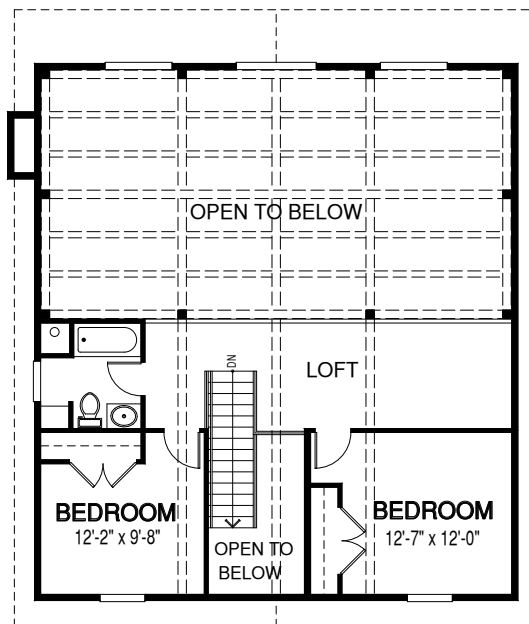
See page 2 for floor plan



### MAIN FLOOR



### UPPER FLOOR



Contact us today for a price quote or details: [linwoodhomes.com](http://linwoodhomes.com) • 1-888-546-9663

**TIMBER FRAME & LOG:** This home package includes concept design, construction plans, technical support, and all the premium quality materials required to build the structure of this home to the lock-up stage. Materials include select-grade specialty timbers or logs, hi-line export-grade lumber, and an extensive choice of siding, roofing and energy-efficient windows. This design features specialized construction. It includes full custom design to meet site-specific needs.