

The Princeton

TIMBER FRAME & LOG



The Princeton has a truly liveable floor plan, with a beautiful master suite and a large vaulted great room. The second floor showcases 2 large bedrooms, a full bathroom, and an open walkway that overlooks the main floor.

Square Footage

MAIN FLOOR	1441
UPPER FLOOR	832
UNFINISHED/ BONUS AREA	—
TOTAL LIVING AREA	2333
GARAGE	—
COVERED ENTRY/PORCH	1016
BALCONY/ DECK	—
TOTAL AREA	3349

Dimensions

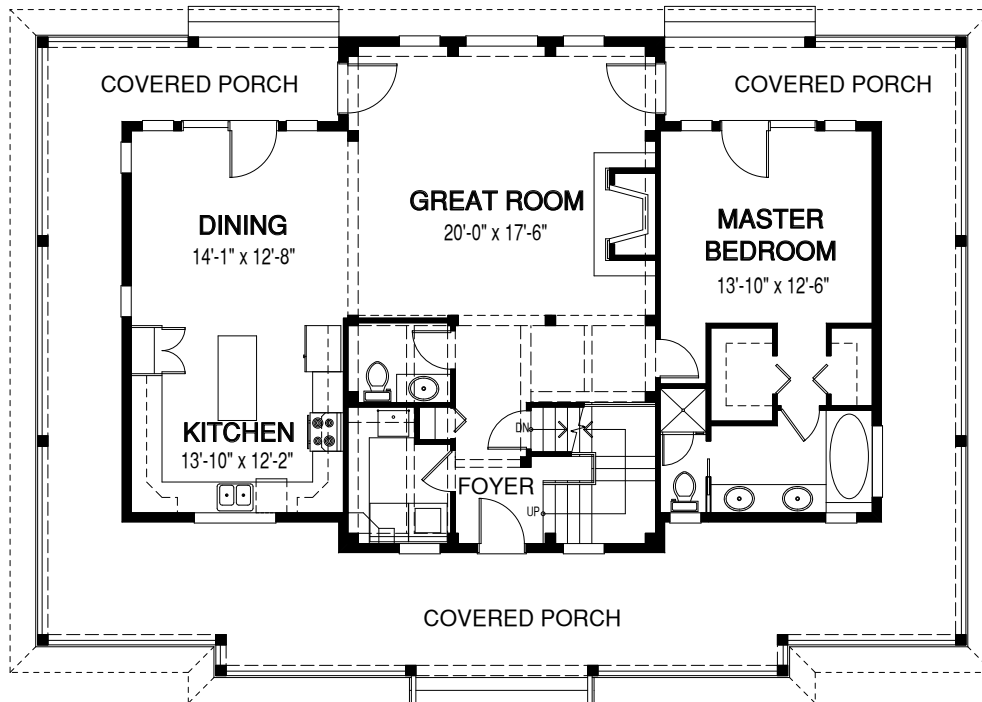
WIDTH	DEPTH
60	42



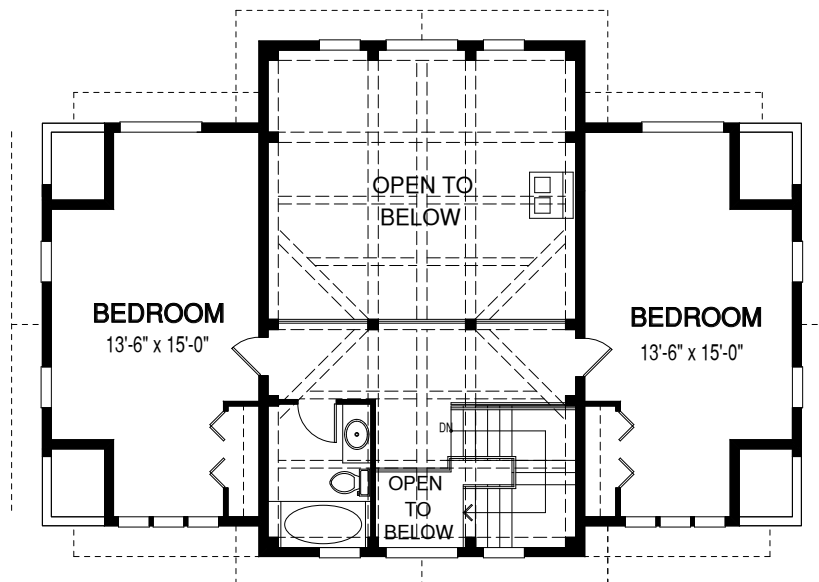
See page 2 for floor plan



MAIN FLOOR



UPPER FLOOR



Contact us today for a price quote or details: linwoodhomes.com • 1-888-546-9663

TIMBER FRAME & LOG: This home package includes concept design, construction plans, technical support, and all the premium quality materials required to build the structure of this home to the lock-up stage. Materials include select-grade specialty timbers or logs, hi-line export-grade lumber, and an extensive choice of siding, roofing and energy-efficient windows. This design features specialized construction. It includes full custom design to meet site-specific needs.