

The *Langara*

TIMBER FRAME & LOG



Square Footage

MAIN FLOOR	1423
UPPER FLOOR	401
UNFINISHED/ BONUS AREA	—
TOTAL LIVING AREA	1824
GARAGE	—
COVERED ENTRY/PORCH	444
BALCONY/ DECK	—
TOTAL AREA	2268

Dimensions

WIDTH	DEPTH
63	42

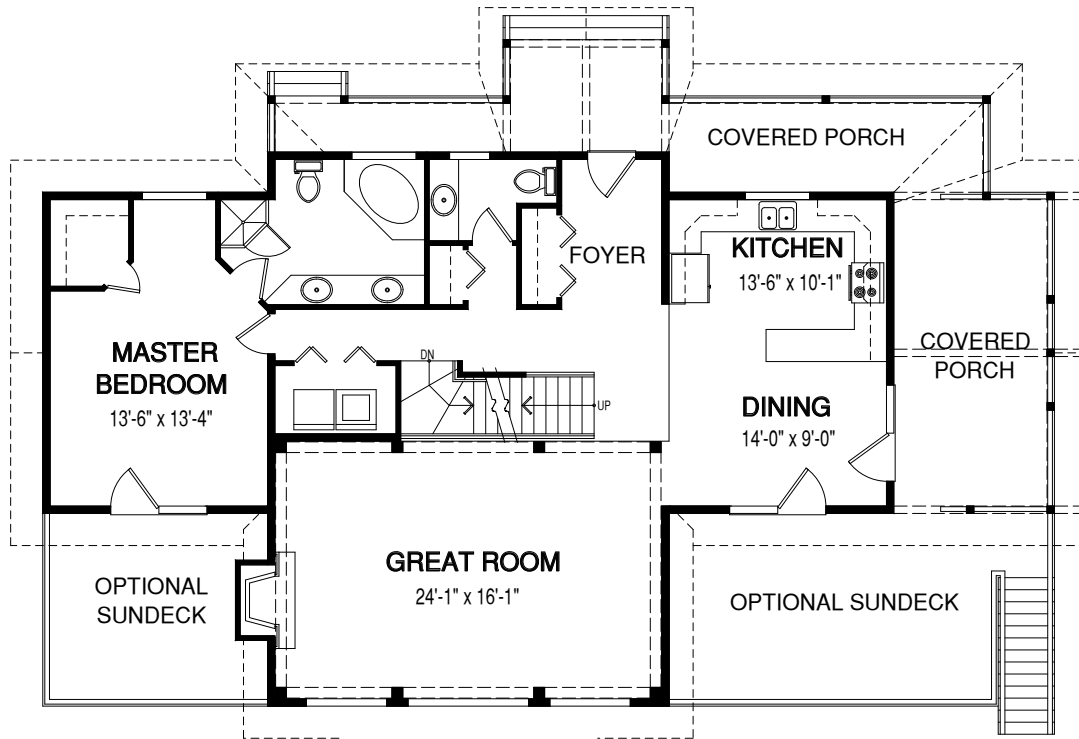
A large screened porch extends the living space on the main floor of this well laid out 3 bedroom home. It's easy to see why the Langara's great room is so unique, with its timber bents and beautiful windows.



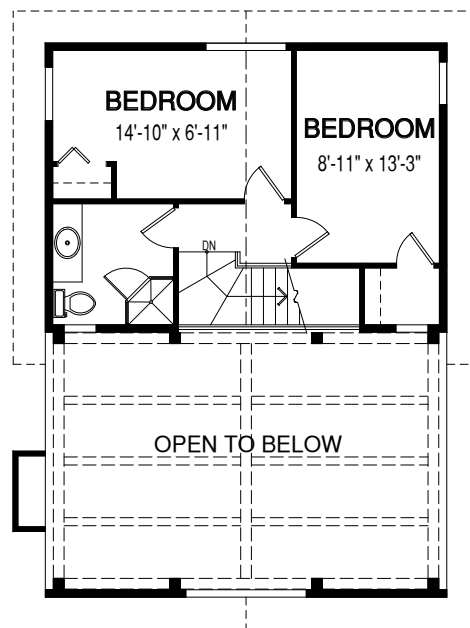
See page 2 for floor plan



MAIN FLOOR



UPPER FLOOR



Contact us today for a price quote or details: linwoodhomes.com • 1-888-546-9663

TIMBER FRAME & LOG: This home package includes concept design, construction plans, technical support, and all the premium quality materials required to build the structure of this home to the lock-up stage. Materials include select-grade specialty timbers or logs, hi-line export-grade lumber, and an extensive choice of siding, roofing and energy-efficient windows. This design features specialized construction. It includes full custom design to meet site-specific needs.