

The *Kentucky*

TIMBER FRAME & LOG



Square Footage

MAIN FLOOR	1887
UPPER FLOOR	1562
UNFINISHED/ BONUS AREA	—
TOTAL LIVING AREA	3449
GARAGE	576
COVERED ENTRY/PORCH	984
BALCONY/ DECK	—
TOTAL AREA	5009

Dimensions

WIDTH	DEPTH
91	44

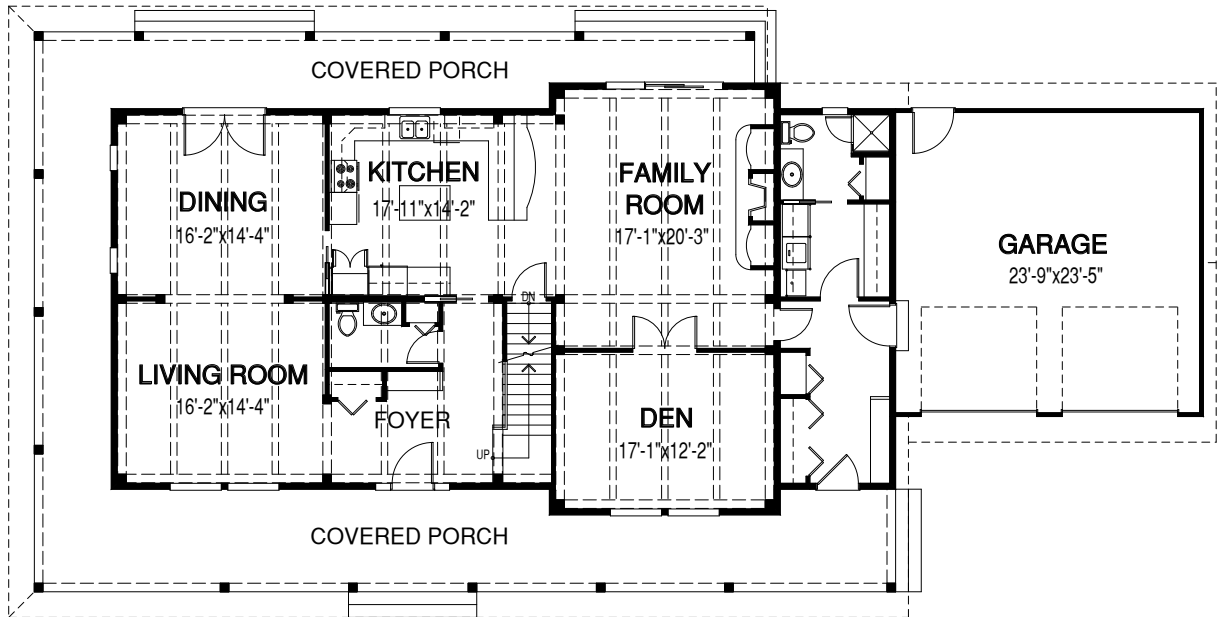
A 5 bedroom home designed for an active family. The focal point is a large kitchen and family room, with a formal dining room. The Kentucky's large, private rooms offer the space for everyone to congregate or to spread out.



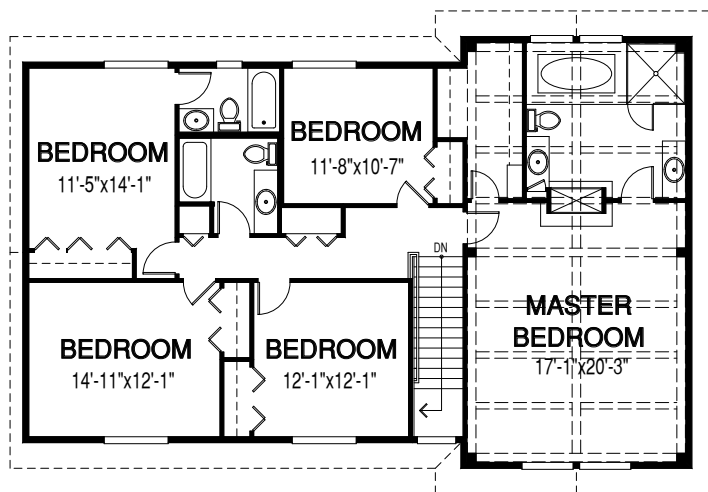
See page 2 for floor plan



MAIN FLOOR



UPPER FLOOR



Contact us today for a price quote or details: linwoodhomes.com • 1-888-546-9663

TIMBER FRAME & LOG: This home package includes concept design, construction plans, technical support, and all the premium quality materials required to build the structure of this home to the lock-up stage. Materials include select-grade specialty timbers or logs, hi-line export-grade lumber, and an extensive choice of siding, roofing and energy-efficient windows. This design features specialized construction. It includes full custom design to meet site-specific needs.