

# The *Whitmore* (7-3-945)

TRADITIONAL



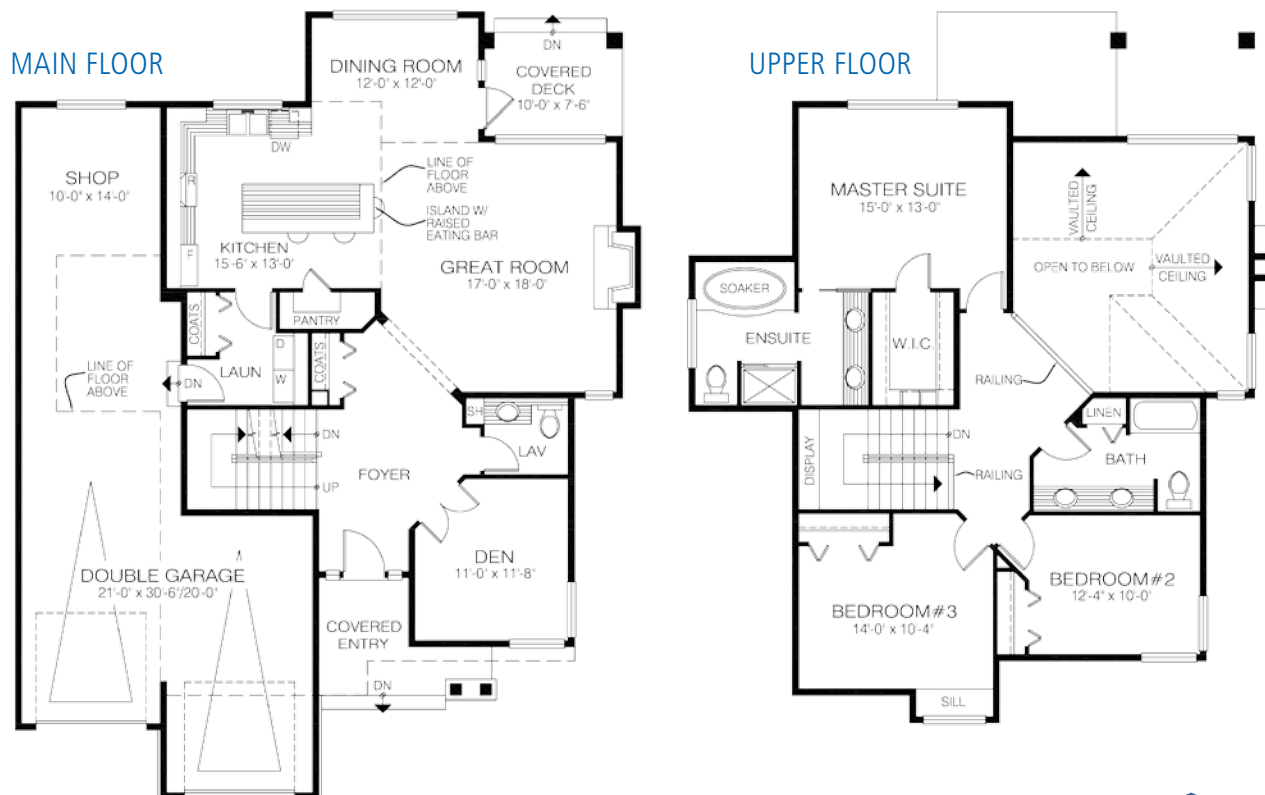
This beautiful family home has an air of Victorian charm. The archway over the front entrance, deep front porch, and the curved extension of the highest gable give it a timeless, elegant look.

<b>Square Footage</b>	
MAIN FLOOR	1157
UPPER FLOOR	1073
LOWER FLOOR	—
<b>TOTAL LIVING AREA</b>	<b>2230</b>
GARAGE	735
COVERED ENTRY/PORCH	151
BALCONY/DECK	—
<b>TOTAL AREA</b>	<b>3116</b>

**Dimensions**

WIDTH	DEPTH
46	57

Designs, Images & Plans © Jenish House Designs Limited



Contact us today for a price quote or details:  
[linwoodhomes.com/ask](http://linwoodhomes.com/ask) • 1-888-546-9663

**TRADITIONAL:** This home package includes design, construction plans, and all the materials required to build the structure of this home to the lock-up stage. Materials include export-grade framing lumber, an engineered wood truss system, low-maintenance siding and energy-efficient windows. This design features the use of conventional construction methods. It can be modified to suit individual site conditions.

