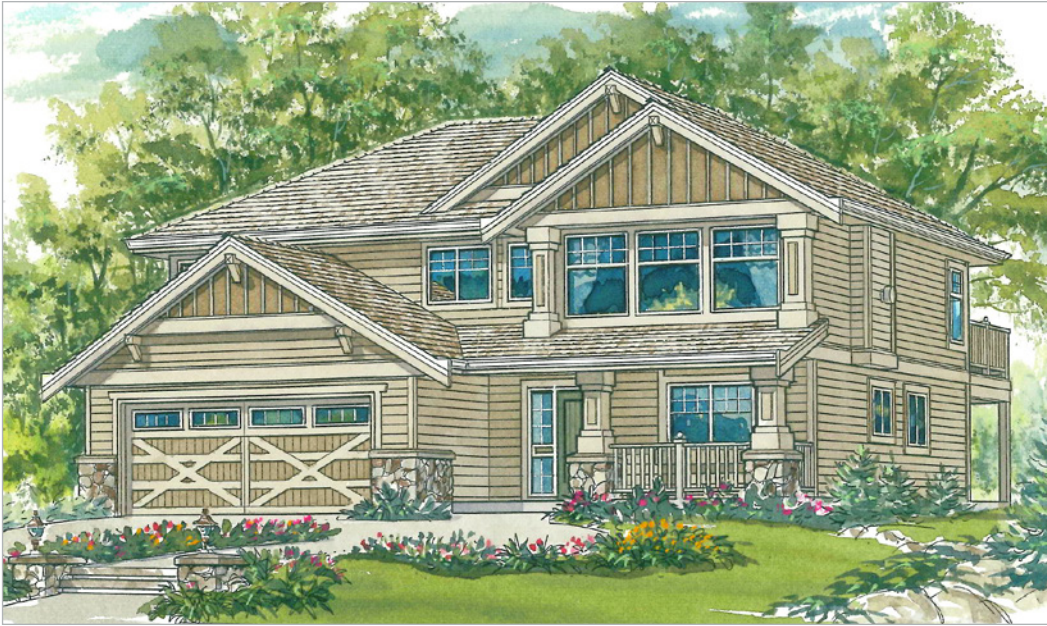


# The *Maynard* (2-3-711)

TRADITIONAL



Practical and attractive, this 3-bedroom home makes an impressive statement. The large great room is a focal point of the Maynard and is sure to be the center of family activities.

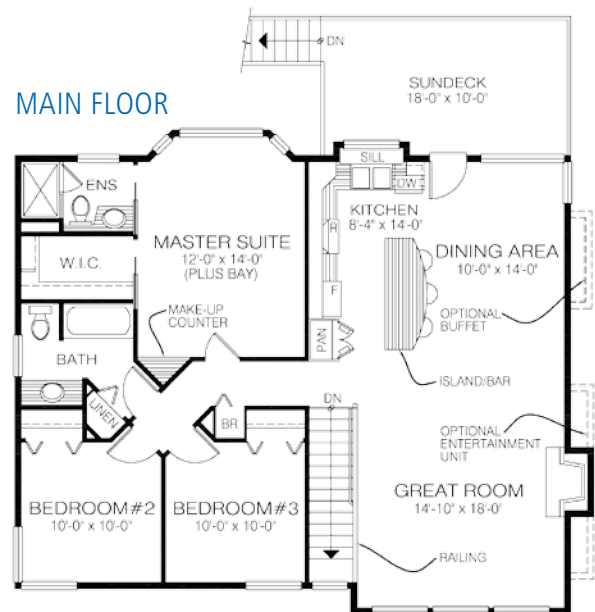
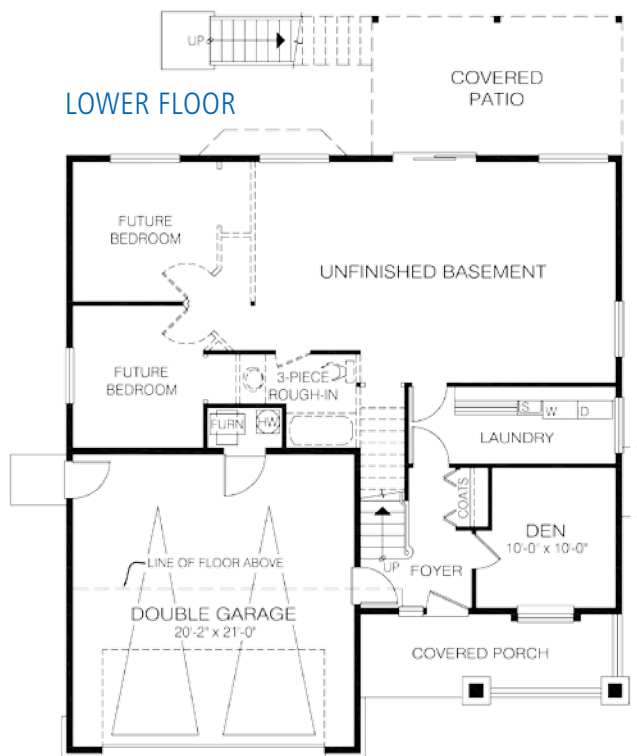
## Square Footage

MAIN FLOOR	1276
UPPER FLOOR	—
LOWER FLOOR	1082
TOTAL LIVING AREA	<b>2358</b>
GARAGE	450
COVERED ENTRY/PORCH	113
BALCONY/DECK	180
TOTAL AREA	<b>3101</b>

## Dimensions

WIDTH	DEPTH
41	44

Designs, Images & Plans © Jenish House Designs Limited



Contact us today for a price quote or details:  
[linwoodhomes.com/ask](http://linwoodhomes.com/ask) • 1-888-546-9663

**TRADITIONAL:** This home package includes design, construction plans, and all the materials required to build the structure of this home to the lock-up stage. Materials include export-grade framing lumber, an engineered wood truss system, low-maintenance siding and energy-efficient windows. This design features the use of conventional construction methods. It can be modified to suit individual site conditions.

