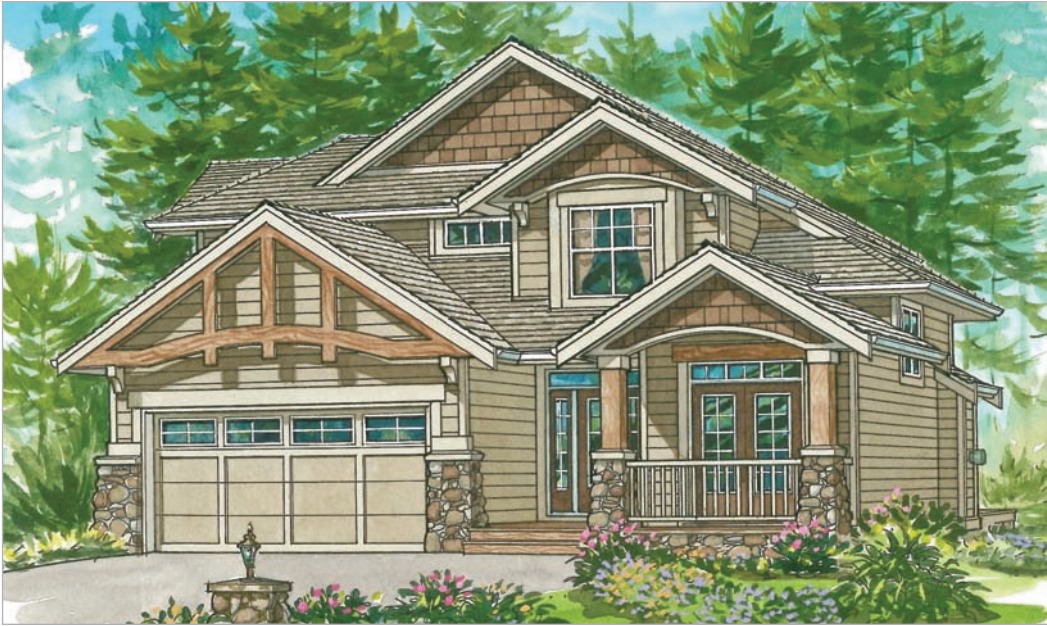


The *Henderson* (7-3-946)

TRADITIONAL



This 3-bedroom family residence is both welcoming and impressive. The cross-bracing above the garage door, the deep eaves, and the mullioned windows evoke the Arts and Crafts style.

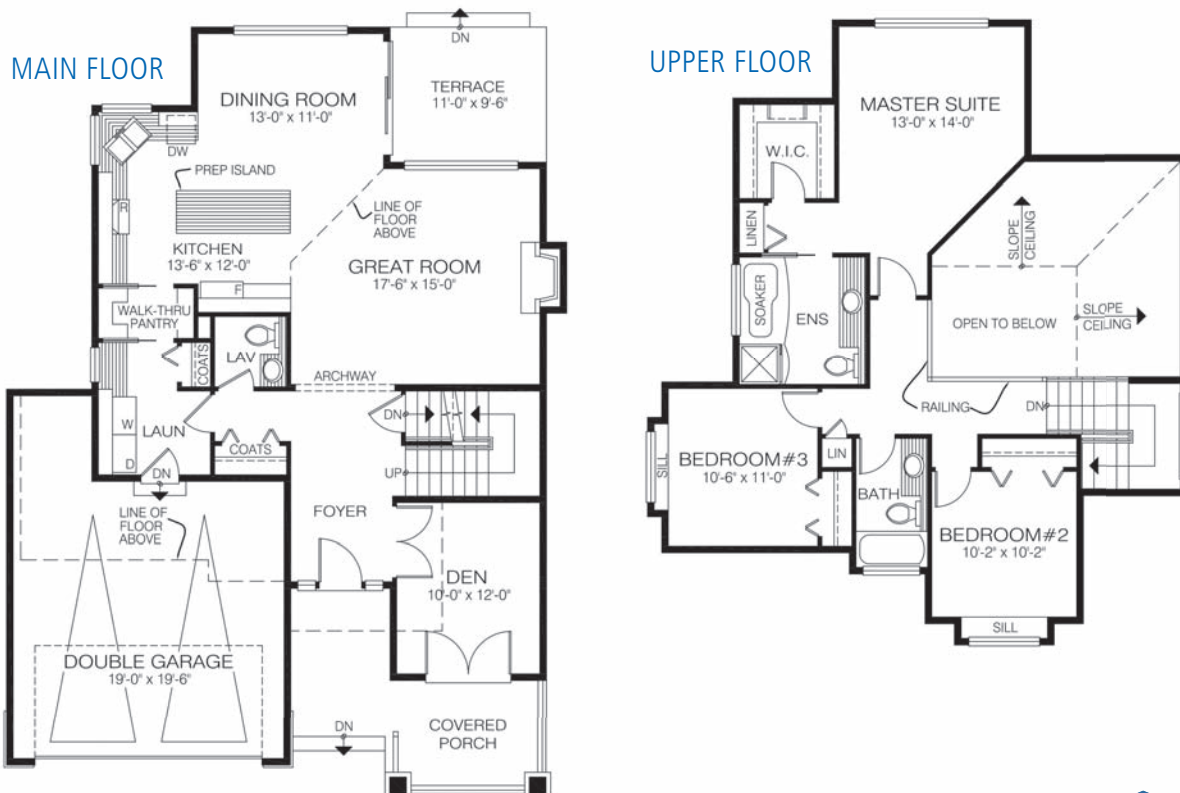
Square Footage

MAIN FLOOR	1091
UPPER FLOOR	906
LOWER FLOOR	—
TOTAL LIVING AREA	1997
GARAGE	436
COVERED ENTRY/PORCH	134
BALCONY/DECK	133
TOTAL AREA	2700

Dimensions

WIDTH	DEPTH
38	54

Designs, Images & Plans © Jenish House Designs Limited



Contact us today for a price quote or details:
linwoodhomes.com/ask • 1-888-546-9663

TRADITIONAL: This home package includes design, construction plans, and all the materials required to build the structure of this home to the lock-up stage. Materials include export-grade framing lumber, an engineered wood truss system, low-maintenance siding and energy-efficient windows. This design features the use of conventional construction methods. It can be modified to suit individual site conditions.

