

The *Hearn* (1-3-574A)

TRADITIONAL



The dramatic, arched entry is a key feature of this single-storey design. Once inside, the foyer offers a view to the great room in the center of the house and to the sundeck beyond.

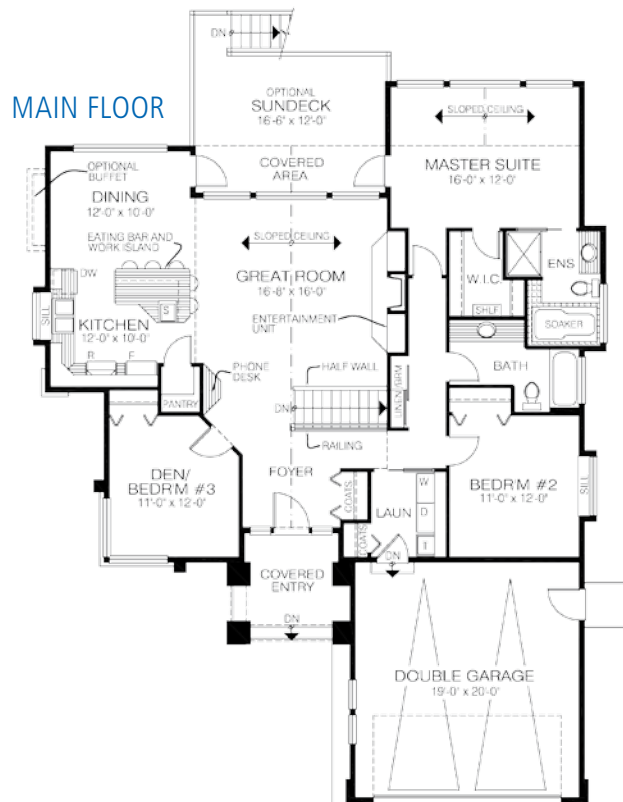
Square Footage

MAIN FLOOR	1588
UPPER FLOOR	—
LOWER FLOOR	—
TOTAL LIVING AREA	1588
GARAGE	483
COVERED ENTRY/PORCH	158
BALCONY/DECK	—
TOTAL AREA	2229

Dimensions

WIDTH	DEPTH
46	62

Designs, Images & Plans © Jenish House Designs Limited



Contact us today for a price quote or details:
linwoodhomes.com/ask • 1-888-546-9663

TRADITIONAL: This home package includes design, construction plans, and all the materials required to build the structure of this home to the lock-up stage. Materials include export-grade framing lumber, an engineered wood truss system, low-maintenance siding and energy-efficient windows. This design features the use of conventional construction methods. It can be modified to suit individual site conditions.

