

The *Downing* (7-3-908A)

TRADITIONAL



Square Footage

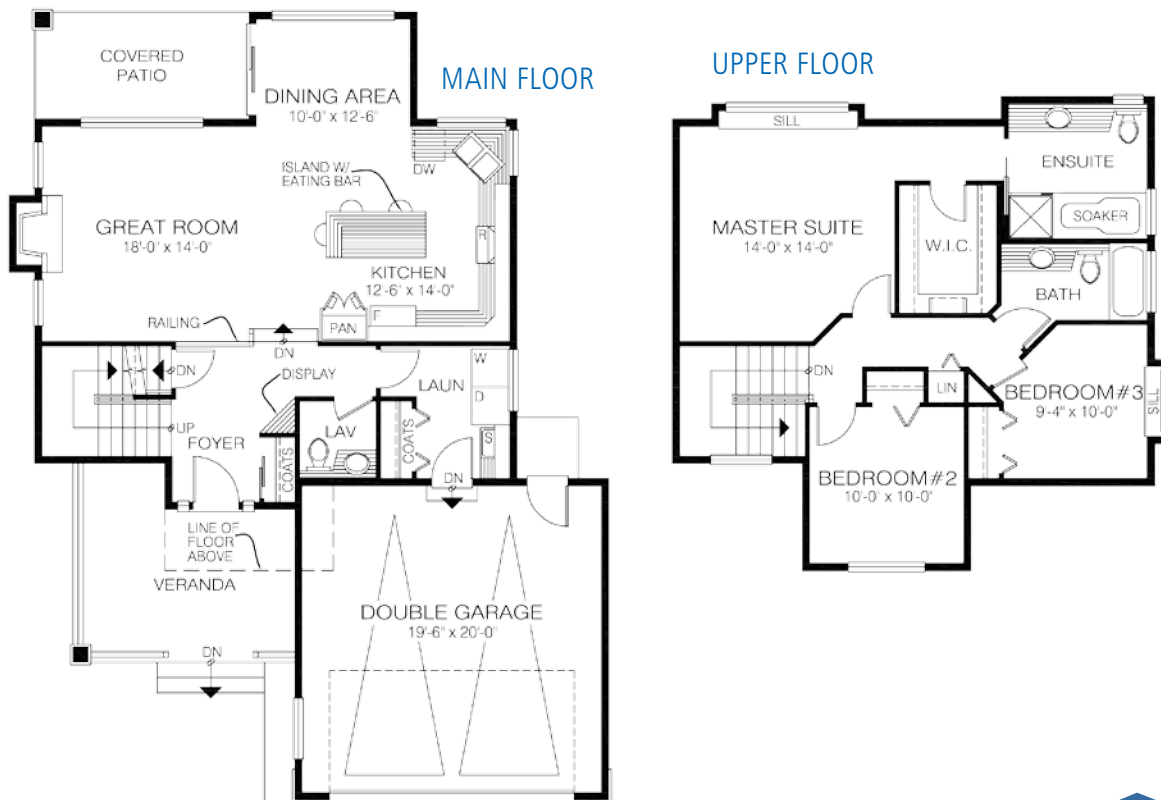
MAIN FLOOR	831
UPPER FLOOR	819
LOWER FLOOR	—
TOTAL LIVING AREA	1650
GARAGE	424
COVERED ENTRY/PORCH	261
BALCONY/DECK	—
TOTAL AREA	2335

Dimensions

WIDTH	DEPTH
38	52

The Downing is ideal for a smaller subdivision lot. The gabled roof, covered front veranda and accents lend character to the exterior. The efficient layout includes everything needed in a family home.

Designs, Images & Plans © Jenish House Designs Limited



Contact us today for a price quote or details:
linwoodhomes.com/ask • 1-888-546-9663

TRADITIONAL: This home package includes design, construction plans, and all the materials required to build the structure of this home to the lock-up stage. Materials include export-grade framing lumber, an engineered wood truss system, low-maintenance siding and energy-efficient windows. This design features the use of conventional construction methods. It can be modified to suit individual site conditions.

