

The *Daniel* (1-3-549B)

TRADITIONAL



Square Footage

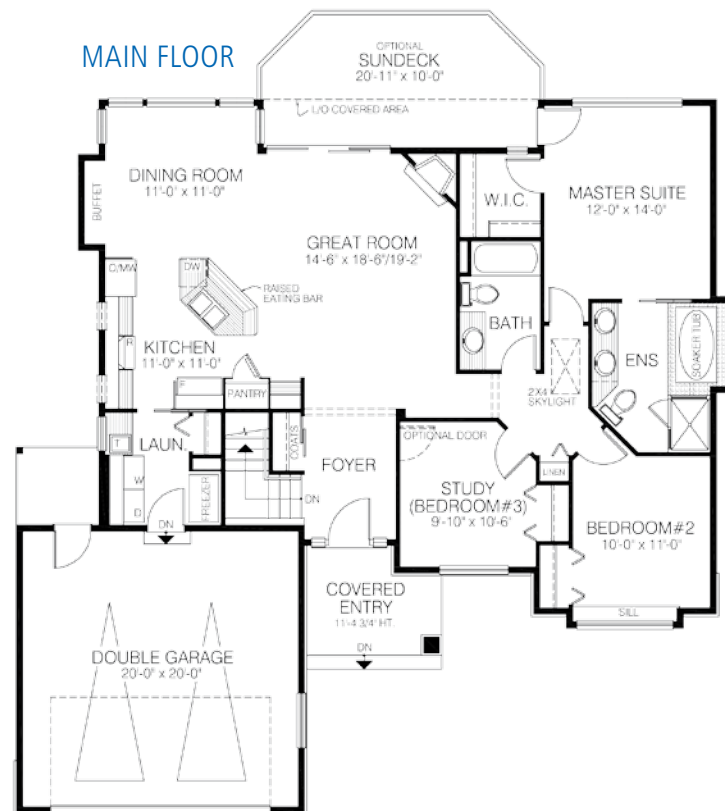
MAIN FLOOR	1485
UPPER FLOOR	—
LOWER FLOOR	—
TOTAL LIVING AREA	1485
GARAGE	434
COVERED ENTRY/PORCH	107
BALCONY/DECK	—
TOTAL AREA	2026

Dimensions

WIDTH	DEPTH
51	52

Sweeping rooflines and a dramatic, arched transom entry contribute to the sophisticated appeal of this compact, open-concept home. A large sun deck, accessed from the family room, adds to the outdoor living space.

Designs, Images & Plans © Jenish House Designs Limited



Contact us today for a price quote or details:
linwoodhomes.com/ask • 1-888-546-9663

TRADITIONAL: This home package includes design, construction plans, and all the materials required to build the structure of this home to the lock-up stage. Materials include export-grade framing lumber, an engineered wood truss system, low-maintenance siding and energy-efficient windows. This design features the use of conventional construction methods. It can be modified to suit individual site conditions.

