

The *Belfair* (7-4-942)

TRADITIONAL



With its multi-gabled roof-line and classic columns, this 4-bedroom, 2-storey family home combines the best of both worlds. It has all the modern conveniences contained in an elegant, old-fashioned exterior.

Square Footage

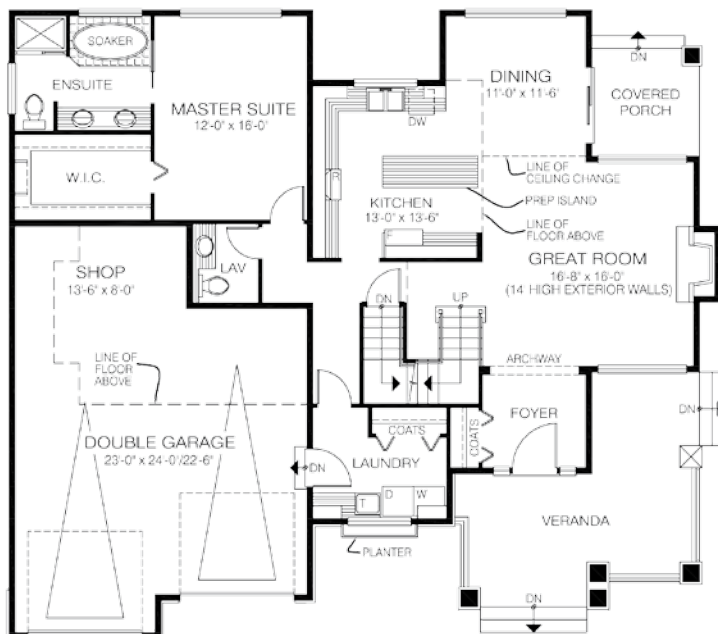
MAIN FLOOR	1418
UPPER FLOOR	722
LOWER FLOOR	—
TOTAL LIVING AREA	2140
GARAGE	671
COVERED ENTRY/PORCH	326
BALCONY/DECK	—
TOTAL AREA	3137

Dimensions

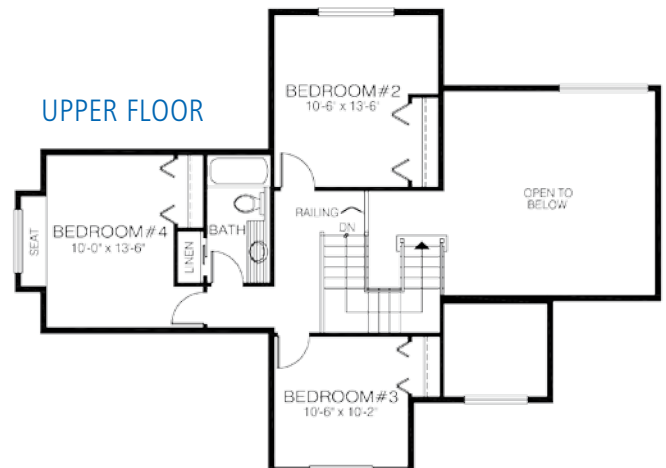
WIDTH	DEPTH
55	50

Designs, Images & Plans © Jenish House Designs Limited

MAIN FLOOR



UPPER FLOOR



Contact us today for a price quote or details:
linwoodhomes.com/ask • 1-888-546-9663

TRADITIONAL: This home package includes design, construction plans, and all the materials required to build the structure of this home to the lock-up stage. Materials include export-grade framing lumber, an engineered wood truss system, low-maintenance siding and energy-efficient windows. This design features the use of conventional construction methods. It can be modified to suit individual site conditions.

