

# The Centennial

TIMBER FRAME & LOG



## Square Footage

MAIN FLOOR	3343
UPPER FLOOR	555
UNFINISHED/ BONUS AREA	—
TOTAL LIVING AREA	<b>3898</b>
GARAGE	—
COVERED ENTRY/PORCH	94
BALCONY/ DECK	—
TOTAL AREA	<b>3992</b>

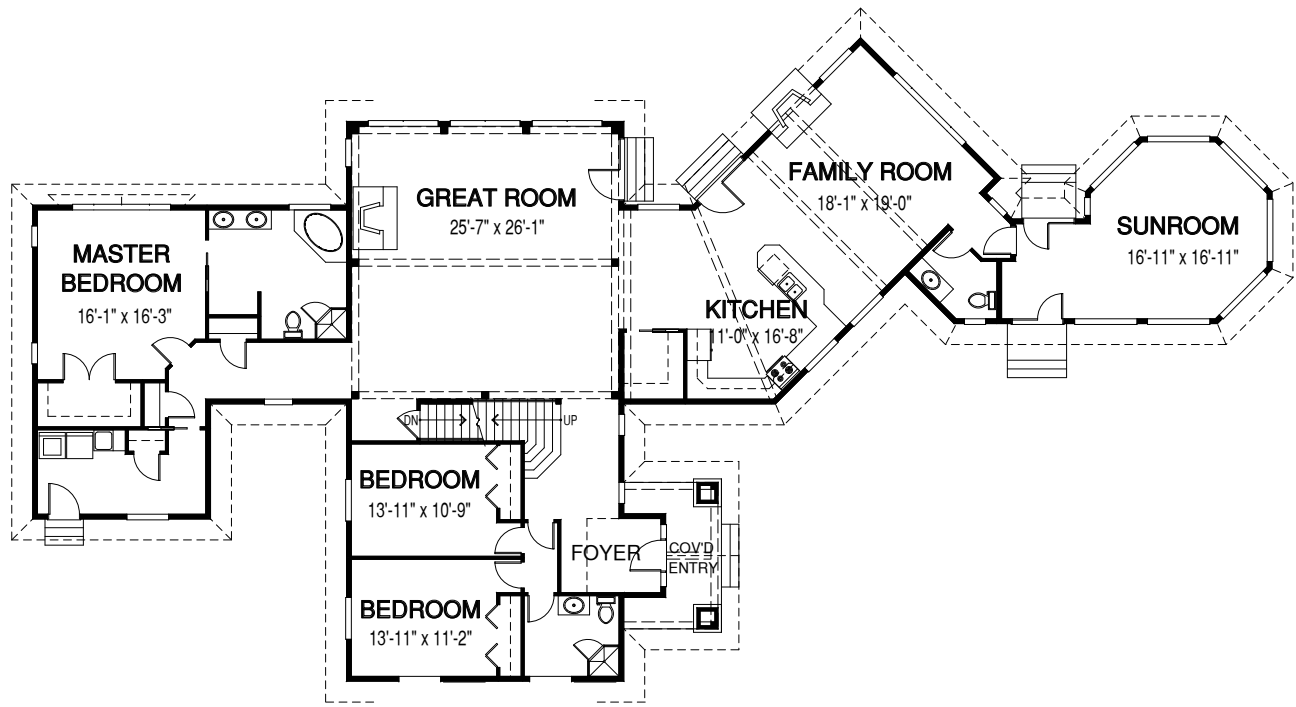
## Dimensions

WIDTH	DEPTH
119	62

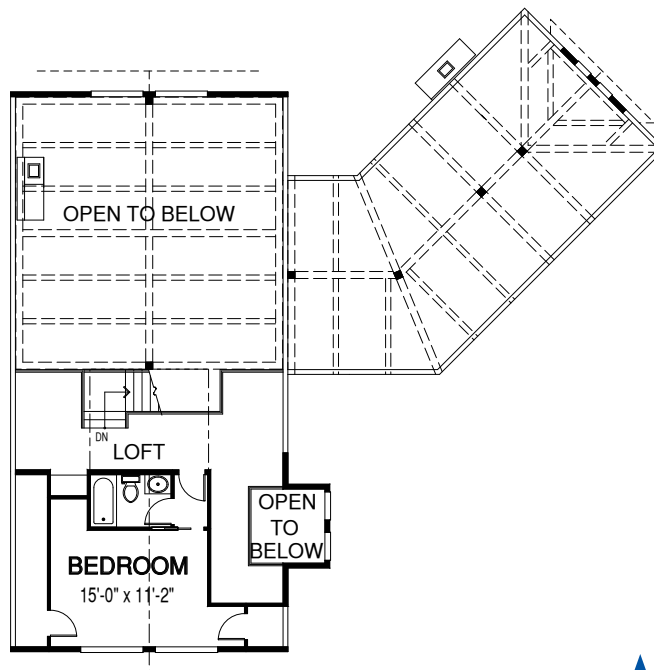
The spacious great room, with its spectacular hammer beam truss, provides amazing views and a comfortable place for relaxing. Another great feature of the Centennial is the grand, octagonal sunroom.



### MAIN FLOOR



### UPPER FLOOR



Contact us today for a price quote or details: [linwoodhomes.com](http://linwoodhomes.com) • 1-888-546-9663

**TIMBER FRAME & LOG:** This home package includes concept design, construction plans, technical support, and all the premium quality materials required to build the structure of this home to the lock-up stage. Materials include select-grade specialty timbers or logs, hi-line export-grade lumber, and an extensive choice of siding, roofing and energy-efficient windows. This design features specialized construction. It includes full custom design to meet site-specific needs.