

# The *Anmore*

## TIMBER FRAME & LOG



### Square Footage

MAIN FLOOR	1796
UPPER FLOOR	1093
UNFINISHED/ BONUS AREA	—
TOTAL LIVING AREA	<b>2889</b>
GARAGE	—
COVERED ENTRY/PORCH	667
BALCONY/ DECK	—
TOTAL AREA	<b>3556</b>

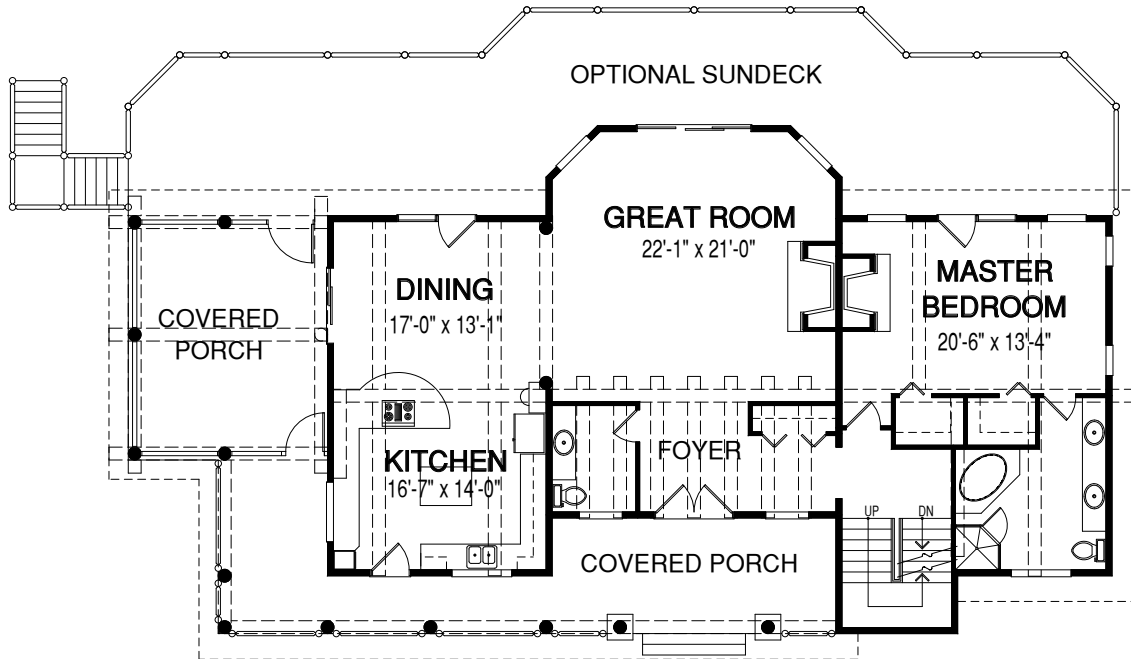
### Dimensions

WIDTH	DEPTH
77	40

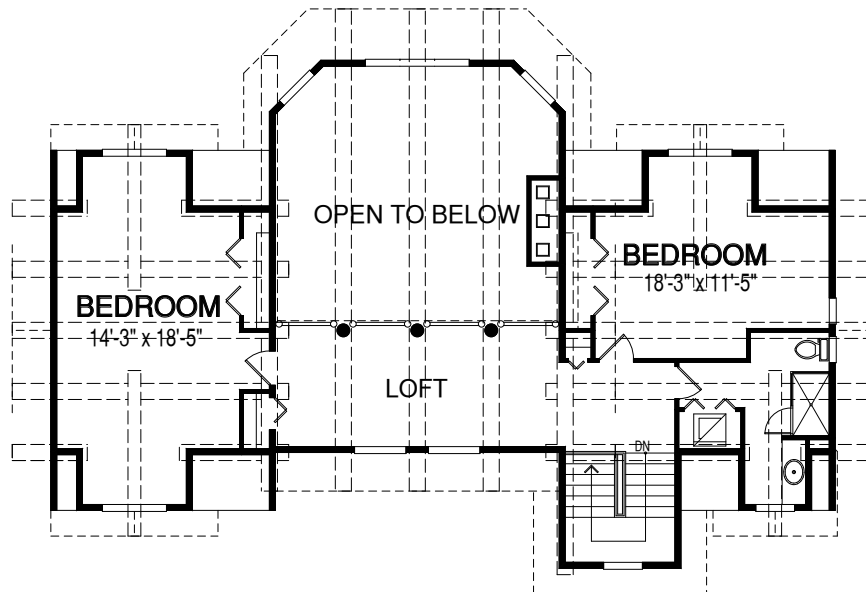
With its open concept floor plan, expanses of upper and lower windows, and magnificent, hand hewn logs, the Anmore is spectacular on all fronts. The master suite is a welcome sanctuary for rest and relaxation.



### MAIN FLOOR



### UPPER FLOOR



Contact us today for a price quote or details: [linwoodhomes.com](http://linwoodhomes.com) • 1-888-546-9663

**TIMBER FRAME & LOG:** This home package includes concept design, construction plans, technical support, and all the premium quality materials required to build the structure of this home to the lock-up stage. Materials include select-grade specialty timbers or logs, hi-line export-grade lumber, and an extensive choice of siding, roofing and energy-efficient windows. This design features specialized construction. It includes full custom design to meet site-specific needs.