

The Mystic Point

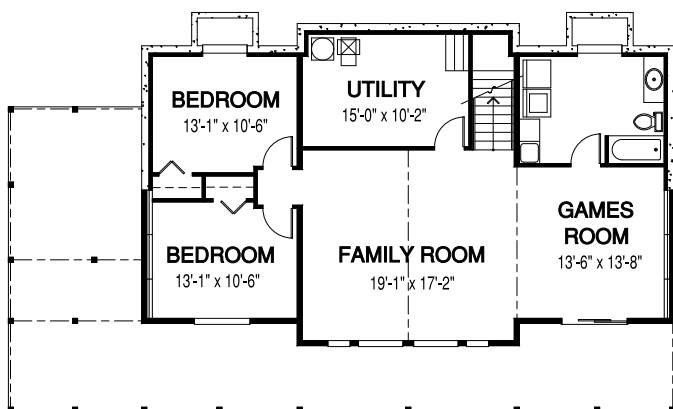
PLAN OF THE MONTH | August 2015



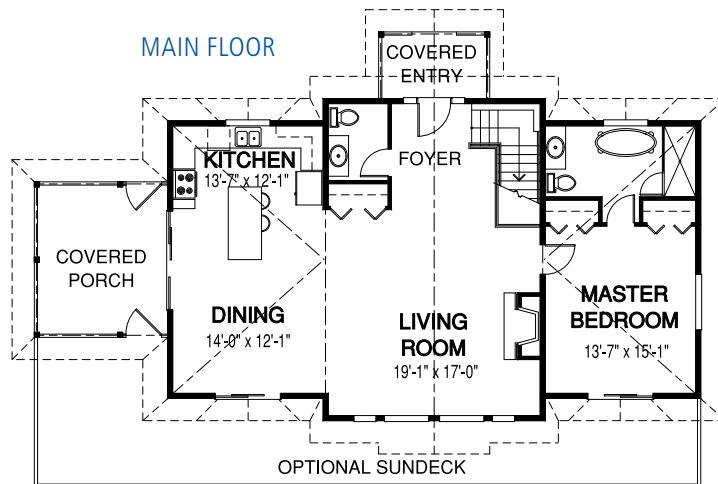
WIDTH: 60 ft. | DEPTH: 35 ft. | MAIN FLOOR: 1280 sq. ft. | OPTIONAL BASEMENT: 1280 sq. ft. | TOTAL AREA: 2560 sq. ft.

Designs, Images & Plans © Linwood Homes Ltd.

OPTIONAL BASEMENT



MAIN FLOOR



The Mystic Point is an exciting, new Linwood home package or house kit. The optional basement plan is ideal for a walk-out lot since the large windows bring natural light into this well-planned space.

To see details of this plan online, [click here](#). You can also see more images on our [Facebook page](#).



www.linwoodhomes.com

Contact your Linwood consultant for details, or call: U.S. & Canada: 1-888-546-9663