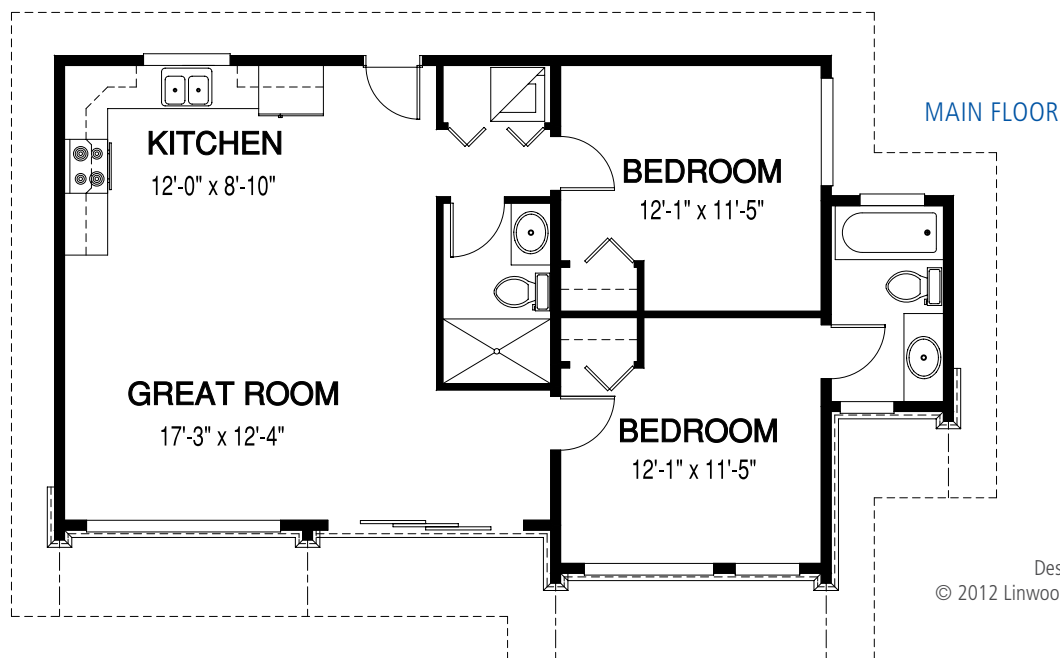


# The Northwynd 2

PLAN OF THE MONTH | January 2012



WIDTH: 42 ft. | DEPTH: 25 ft. | MAIN FLOOR: 875 sq. ft. | TOTAL AREA: 875 sq. ft.



Inspired by the popularity of Northwynd 1 home design, this home kit offers a slightly larger footprint and one extra bathroom. As with all Linwood home packages, the building materials are delivered worldwide.

Can be ordered in:

**A** Architectural Specification

[Click here to view our 3 new eBooks online.](#)

 **LINWOOD**  
CUSTOM HOMES

[www.linwoodhomes.com](http://www.linwoodhomes.com)

Contact your Linwood representative for a price, or call: U.S. & Canada: 1-888-546-9663